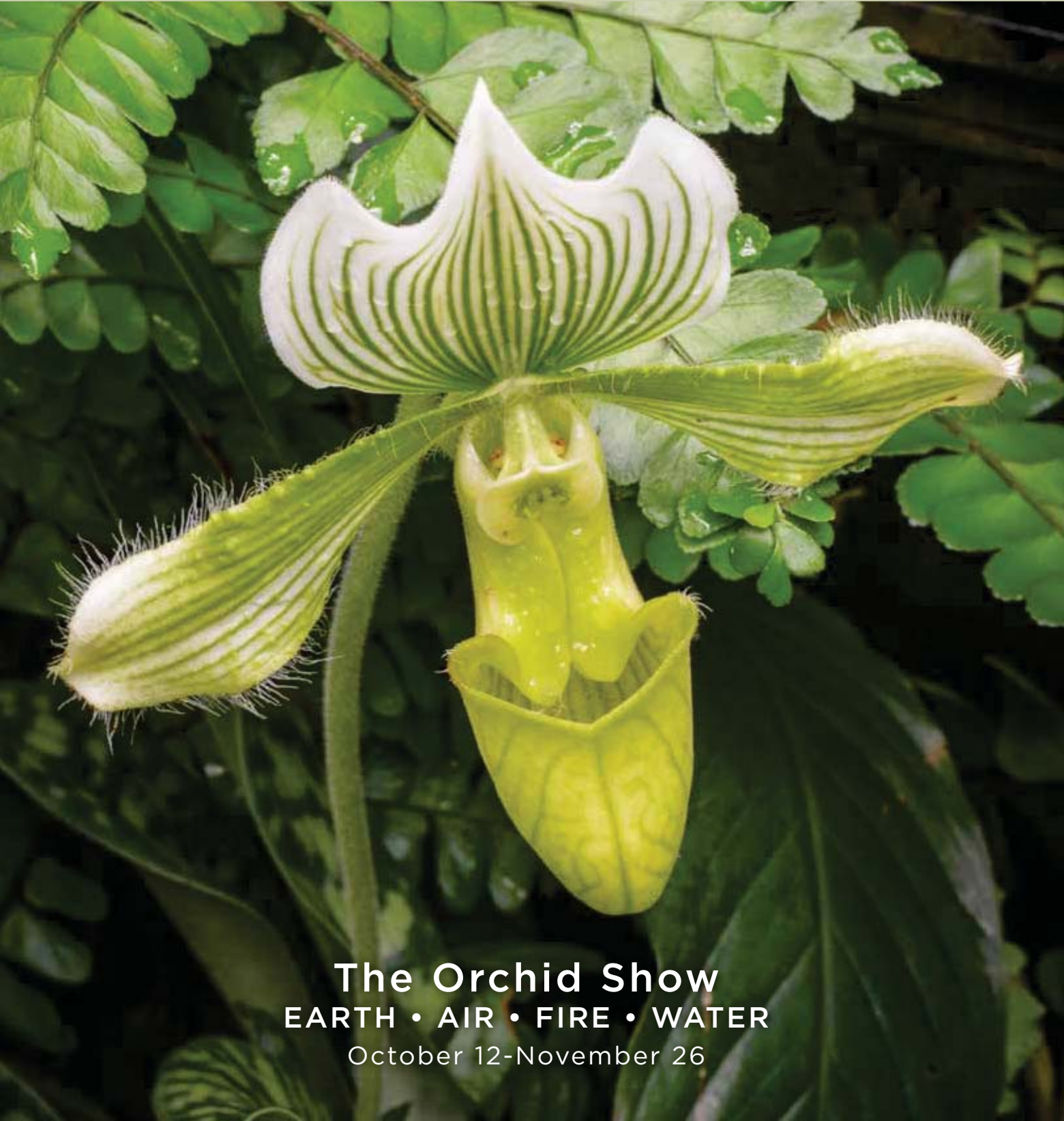


MARIE
SELBY
BOTANICAL
GARDENS®

TROPICAL dispatch

SEPTEMBER-DECEMBER 2017



The Orchid Show
EARTH • AIR • FIRE • WATER
October 12-November 26

Plants. Not a day, not an hour, not a second, goes past without human dependence on plants. These chlorophyll-producing, light-absorbing, oxygen-disseminating organisms are found everywhere on earth (even in the water), and all too often we as humans pass them buy, not even acknowledging their basic, life-giving value.

Perhaps that is why botanical gardens are so uniquely positioned to make people sit up and take notice of what has become generally undervalued. At Selby Gardens we host exhibitions, special events, lectures and classes to encourage our guests to take a “time out” and reconnect with the natural world.

Our hope is that a child coming here on a field trip will be inspired to protect the environment as they make their way in the world. Or an adult’s walk through our conservatory will ignite a curiosity about how to care for and grow plants. These small stones on the path of awareness can lead to greater support long into the future for all living things.

I think you’ll be inspired by the voices of adults and children alike in this issue who are sharing Selby Gardens’ mission throughout the world. The camp counselors featured on page 16 offer hope for the latest generation and those to come after them. Our featured volunteer Wade Collier (page 12) demonstrates that it’s never too late to make a contribution to the world of plants and science, even following an already impressive professional career. And of course the trees planted by Marie Selby herself included in our “Treasured Trees” article (page 10) showcase the ultimate future-planning proverb that the “best time to plant a tree was 20 years ago,” (or in Marie’s case, 80 years ago).

At Selby Gardens we will continue planting trees - both figuratively and literally - to ensure all who connect with us expand their appreciation for plants, especially epiphytes. On page four be sure to read about the beginning stages of our master site planning process. We’ve also included in this issue an annual review of our successes for the past year (pages 22-23) to show the Gardens’ reach and impact. There is much work to be done, but nothing excites a gardener more than fertile ground to be sown.

For those in search of more inspiration, please join us during our 2017 **Orchid Show**, which opens on October 12 and is sure to be another spectacular horticultural show created by our horticulture team. This display, along with an accompanying museum exhibition on orchid hunting past and present in the Payne Mansion’s Museum of Botany & the Arts, will prove that plants are just as important to matters of the heart and creativity as they are for air, medicine, clothing, shelter and food.

That is the point. Plants are important. Let’s pay attention and celebrate them.

Cheers,

Jennifer O. Rominiecki



**"THESE SMALL STONES
ON THE PATH OF
AWARENESS CAN
LEAD TO GREATER
SUPPORT LONG INTO
THE FUTURE FOR ALL
LIVING THINGS."**

BOARD OF TRUSTEES

Emily Walsh, *Chair*
Dr. Kelvin Cooper, *Vice-Chair*
Michael J. Wilson, Esq., *Secretary*
J. Allison Archbold, Esq., *Treasurer*
Teri A Hansen
Stephen Hazeltine
Pauline Wamsler Joerger
Nora Johnson
Thomas B. Luzier, Esq.
Marina Mazzarantani
Sandy Rederer
Wayne Rollins
Dr. Laurey T. Stryker
Sharyn Weiner
Arthur M. Wood, Jr.
Jennifer O. Rominiecki, *President and CEO*

ADVISORY COMMITTEE

Dr. Laurey T. Stryker, *Chair of the Advisory Committee*
Gerri Aaron
John Dart
Norbert P. Donelly
Martin Faust
William Gamble
Jean Weidner Goldstein
Barbara Hansen
Katherine Harris
Gary Heard
Carolyn Johnson
Wilson M. Jones
GeeDee Kerr
Marcy Klein
Beverly Koski
Martin Kossoff
Dr. Elaine Marieb
Nathalie McCulloch
Charles Murphy
Alice Rau
Michael Saunders
Charles Stottlemeyer
Dorothy Stottlemeyer
Joseph Strosnik
Margaret Wise
Peggy Wood

MISSION

To provide an oasis of inspiration and tranquility, while furthering the understanding and appreciation of plants, especially epiphytes.

PROGRAM SPONSORS

Selby Gardens programs are sponsored in part by the State of Florida, Department of State, Division of Cultural Affairs; the Florida Council on Arts and Culture; and are paid for in part by Sarasota County Tourist Development Tax Revenue



MEMBER ADDRESS CHANGES

Mail: Membership
Marie Selby Botanical Gardens
811 South Palm Avenue, Sarasota, FL 34236
Email: membership@selby.org
Phone: (941) 366-5731, ext. 231



Accredited by the
American Alliance of Museums

VOLUME 44, ISSUE 3

Message from the President and CEO 3

NEWS 4-7

THE ORCHIDS OF SELBY GARDENS

Notable Specimens from the Collection 8-9

TREASURED TREES

Selby Gardens Is Home to a Remarkable
Collection of Tropical Trees. 10-11

SUPER HERO OF SELBY GARDENS

Volunteer Wade Collier Documents Selby Gardens’
Research From Florida to Brazil 12-13

CAMP LOOKOUT

Teen Counselors Share Some of Their Favorites 14

RECOMMENDED READS 15

EVENTS & EXHIBITS 16-17

CLASSES 18-19

BOTANICAL BRIEFINGS 20

SELBY GARDENS’ ANNUAL REVIEW

How Did We Do This Last Year?. 22-23

SUPPORT & DONORS 24-27

Would you prefer to receive your *Tropical Dispatch* electronically?
If so, please email us at marketing@selby.org to be part of our conservation efforts.

ABOUT THE COVER

A wonderful specimen of *Paphiopedilum Hsinying* Majakun photographed in the Conservatory at Selby Gardens.

Photo by Darren Erickson.

HOURS & ADMISSIONS

Garden Hours The Gardens are open 10 am – 5 pm every day except Christmas Day. Please check the website for special event and weather closings.

Admission Members: Free Adults: \$20
Children 4-17: \$10 3 & under: Free

Connect with Us! @selbygardens

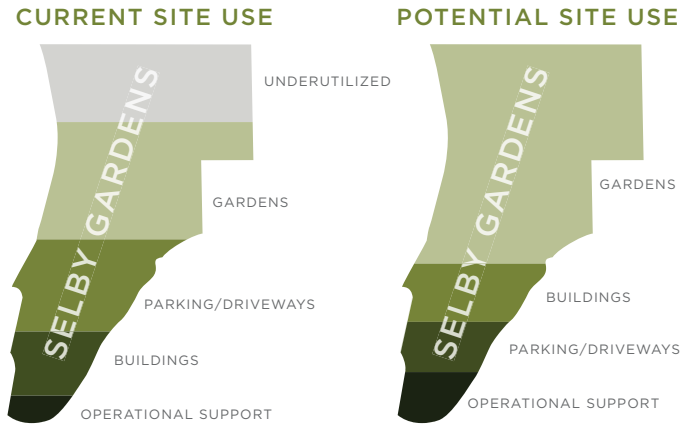
GROWING THE GARDENS

While details are still forming, early results of months of research and site analysis show that Selby Gardens, though landlocked, has the unique opportunity to nearly double the Gardens' green space as the master site plan is reimagined with guidance from the landscape architecture studio OLIN.

A final site plan will be released later this year based on site visits, interviews and meetings with city planners, volunteers and professional staff to develop an actionable, feasible plan. Early drafts indicate that making better use of the Gardens' 15 acres could increase property dedicated to horticultural display, and at the same time improve parking and walkability, plus ensure safety of our living collection from future sea level change.

Estimates show the square footage committed to parking and vehicle access would be reduced nearly by half, and about the same percentage reduction for "behind the scenes" buildings. These changes would make room for taking about 21% of currently underutilized land and converting it to garden greenspace.

Creating the infrastructure necessary to carry out our mission is one of the five key strategic priorities that Selby Gardens' Trustees, leadership, senior staff and



constituents have identified. The others are obtaining greater recognition for its scientific research and showcasing our research and plant collections, adding rotating exhibitions, diversifying our revenue stream, increasing events and partnerships and earning increased international media coverage.

No matter how the details of the master site plan come together, improvements will be made in a series of phases so as to offer the least amount of disruption of research projects and visitor experience. A construction timeline has not been set pending fundraising efforts.



Jennifer Rominiecki with Jean (left) and Alfred (right) Goldstein.

the visions imagined by Mrs. McCullough and Mr. Goldstein for Selby Gardens become a reality."

The Goldsteins have supported Selby Gardens wholeheartedly over the course of the institution's history, notably as lead supporters of the Ann Goldstein Children's Rainforest Garden, which was named for Al's late wife, and of the Gardens' horticulture and arts exhibition series that bears the couple's names, the Jean and Alfred Goldstein Exhibition Series. McCulloch is a former president of the Associates, our auxiliary group of Selby volunteers, educators and ambassadors. She continues to volunteer weekly in the administration offices.

Selby Gardens members and supporters can expect to learn of more details as the plan is finalized in the months to come.

THE ORCHID SHOW

EARTH, AIR, FIRE, WATER

OCTOBER 12 - NOVEMBER 26

Making use of the four elements of nature, this year's Orchid Show features the awe-inspiring diversity and beauty of the largest family of flowering plants on earth. The Orchid Show will combine a display of living plants in the Tropical Conservatory with an exhibition of treasures from the research collections in the Museum of Botany & the Arts. Both parts of the Orchid Show will explore the science and splendor of orchids, making use of earth, air, fire, and water.

THE CONSERVATORY

Experience a lush, almost primitive display of orchids - including many from Selby Gardens' rare collection - that offers surprises at every turn. Orchids grow in all types of environments, and during the show guests will experience displays that evoke rocky terrains, wind-blown vistas, moist locales and sun-soaked scenery.

The conservatory display will expose visitors to the elements by immersing them in a lush rainforest, complete with "elemental" features such as lava rock and a waterfall. Colorful orchids will fill the conservatory, from floor to ceiling, reflecting the remarkable ability of different species to grow in the soil, on stone, and in the air.

THE MUSEUM OF BOTANY & THE ARTS

The museum exhibition will feature stories of orchid exploration and discovery, past and present. It will examine the various environments in which orchids grow and the routes by which botanists travel, braving the elements, to examine orchids in their natural habitats.



The north gallery will showcase rare botanical books and prints from the Gardens' Research Library. Highlights will include an autographed copy of Charles Darwin's *Notes on the Fertilization of Orchids*, published in 1869, and a colored lithograph of *Stanhopea devoniensis*, originally named in honor of the sixth Duke of Devonshire, whose collection of orchids at Chatsworth House started the orchid craze in Victorian Britain. Also of note will be volumes from Selby Gardens' complete set of *Curtis's Botanical Magazine*, dating to 1787, and early editions of the work of Swedish naturalist Carl Linnaeus, who developed the system of binomial nomenclature by which all living organisms are now named.

The south gallery will illustrate the work of the Gardens' botanists through herbarium and spirit specimens from the preserved collections. Also of interest will be high-resolution images of mini-orchids, the details of which are only visible under magnification, and research materials relating to the recent discovery of a new orchid from Mount Roraima in Venezuela, the tabletop mountain that inspired Arthur Conan Doyle's *The Lost World*.

THE ORCHID SHOW



EARTH • AIR
FIRE • WATER

RELATED EVENTS

LUNCH IN THE GARDENS

"Sex, Lies, and Orchids"
with Dr. Antonio Toscano de Brito

OCTOBER 18 • 11 AM

Orchids are the sexiest of all plant families. In this fun and playful discussion, learn what makes orchids so seductive and how intricate and promiscuous these flowers are, relying on enticement and deception to lure their pollinators. Series Chairs: **Jean Weidner Goldstein, Teri Hansen and Margaret Wise**

Series Sponsor: Charles & Margery Barancik Foundation

Event Sponsor: MISH New York

\$150 Guests, \$75 Friends of the Gardens Associates;

ORCHID EVENINGS

OCTOBER 18 - NOVEMBER 22
6-9 PM WEDNESDAYS

Experience the Orchid Show in a whole new light during weekly orchid-inspired cocktail receptions that include live music and food and drink tastings.

\$60 Members, \$75 Guests

WALK-N-TALK TOUR

OCTOBER 26 • 9-9:30 AM &
9:30-10 AM

Learn from our horticulturists tricks for displaying orchids in the soil, on stone, and in the air. No cost; RSVP required; limit 20.

EARLY SUPPORT

Already early commitments from longtime Gardens supporters have been made toward the future growth of Selby Gardens. Last Fall, Nathalie McCullough, a 35-year volunteer at the Gardens and Sarasota philanthropist made a significant, undisclosed gift toward the creation of a new research library. In April of this year, the late Alfred R. Goldstein, president of the Alfred and Ann Goldstein Foundation, Inc., made a gift for a future welcome center to be named for his wife, Jean Goldstein. It is envisioned that the Welcome Center will house visitor services functions, as well as other operating needs.

The Jean Goldstein Welcome Center will highlight the Gardens' world renowned botanical collections, tell the story of the institution, and showcase unique cultural and nature-based arts programs hosted and curated by the garden.

"These gifts will help the Gardens to have a new front door - which is necessary to orienting the increasing number of guests - and showcase the unique cultural and research positions Selby Gardens has both locally and internationally," said Jennifer O. Rominiecki, president and CEO of Selby Gardens. "I'm proud to be able to ensure

SELBY GARDENS WELCOMES NEW RESEARCH BOTANIST



Selby Gardens recently welcomed its newest professional botanist. Sally Chambers, Ph.D., a fern researcher, has joined the botany department at Selby Gardens.

With the addition of Chambers, ferns, of which approximately 30% of the species worldwide are epiphytic, will receive increased attention.

"Sally brings a new set of skills with her that will be important in studying plant genetics and how scientists can combine the knowledge of where plants currently grow to predict how their distributions will shift in response to changing climate and weather patterns to ensure they don't go extinct," said Bruce Holst, director of botany for Selby Gardens.

Chambers' research work will apply to all of the plants Selby Gardens studies, not just ferns. This will be especially important, Holst said, as Selby Gardens expands its research work throughout south Florida and the Caribbean. Her research on ferns rounds out the botany department's key areas of plant study; Dr. Antonio Toscano de Brito is an internationally-recognized scholar on the study of orchids and one of Holst's specialties is the study of bromeliads from the Lost World region of northern South America.

Chambers most recently held the position of postdoctoral researcher at the University of Florida. She holds a Ph.D. in plant ecology and evolutionary biology from Purdue University.

WELCOME NEW TRUSTEES!

Selby Gardens is pleased to welcome five new members to our governing Board of Trustees. These new members will serve three-year terms, helping guide the strategic vision for the future of the institution. Each are members of our Chairman's Circle and are involved in other areas of our community.

Beverly Bartner is a Broadway theatrical producer with her husband, Bob, and a retired antiques dealer. Beverly co-chaired the April 2017 Lunch in the Gardens event, and she and Bob are sponsors of the upcoming Warhol exhibition.

Andrew M. Economos, Ph.D., a native of the area, founded and led a highly successful software company, which he sold in 2005. He underwrites and has served on The New York Botanical Garden's Science Committee and Corporation, and the Board and Science Committee of Westchester Community College. He and his wife, Judith, are sponsors of the Warhol exhibition.

Jean Weidner Goldstein is a former principal dancer with the Stuttgart Ballet. A native of South Africa, Jean founded Sarasota Ballet and co-founded Designing Women Boutique. Jean

and her late husband, Al, are major donors to the Ann Goldstein Children's Rainforest Garden and the founders of the Jean and Alfred Goldstein Exhibition Series. Jean helped found the Lunch in the Gardens series and served on the Selby Gardens Advisory Committee.

Katherine A. Martucci, and her husband Frank, are avid art collectors. They collect 19th century American landscape paintings and have donated many of their art works to several major museums. Katherine has served on the Executive Committee of the Garden Club of America, as well as other philanthropic boards and not for profit organizations. Katherine and Frank are sponsors of the recent Marc Chagall exhibition, and the upcoming Warhol exhibition.

Margaret Wise, a Mississippi native, is a co-founder of Designing Women Boutique and has served in leadership positions on numerous boards throughout Sarasota, along with her husband, Bill. She was a member of the Selby Gardens Advisory Committee, and she helped found the Lunch in the Gardens series.

MEMBER'S DAY PLANT DISTRIBUTION & SALE

SATURDAY, NOVEMBER 4 • 9 AM-2 PM



This fall, Selby Gardens once again hosts the ever-popular Member's Day Plant Distribution and Sale. After coffee and a brief "state of the Gardens" presentation, Members can claim their complimentary plants and be the first to purchase additional plants before the sale opens to the public. Plants are limited and available on a first-come, first-served basis. The general public is invited to purchase plants beginning at noon.

Plants offered this year are:

- *Hoya imperialis* 'alba' (Imperial Hoya)
- *Amorphophallus titanum* (Titan Arum/Corpse Plant)
These seedlings are the progeny of Seymour and Audrey, our famous titan arums.
- *Vriesea fosteriana* ('Red Chestnut')
- *Rhipsalis clavata* (Mistletoe Cactus)
- *Pavonia multiflora* (Brazilian candles)
- *Medinilla* sp. 'Gregori Hambali'
- *Cattleya intermedia*
- ORCHIDS: • *Rhyncholaeliocattleya Hawaiian Prominence* 'America'
- *Vanda Princess Mikasa* 'Pink'
- *Dendrobium Samarai*

Visit selby.org for photos and plant care instructions. The number of free plants offered is based on membership level.

Friends of the Gardens SELBY ASSOCIATES

Supporting the mission of the Gardens since 1980, the Friends of the Gardens - Selby Associates serve, support and grow the Gardens. These noted volunteers are ambassadors of Marie Selby's legacy and the Gardens' scientific mission.

As a member of the Friends of the Gardens - Selby Associates meet new friends while supporting projects and events that benefit Selby Gardens. Activities and meetings are held September through May and membership is open to all members of Selby Gardens. Annual dues range from \$35 - \$100. Activities include being:

- **Ambassadors** (both at Gardens events and throughout the community)
- **Speakers at community organizations**
- **Assistants at special events and fundraisers.**

To sign up or learn more, email associates@selby.org.



SAVE THE DATE: HOLIDAY LUNCHEON

DECEMBER 6, 11 AM - 1 PM

Celebrate the holiday season with a special Selby Gardens luncheon featuring White House decorator and author, Coleen Christian Burke. Serving on a White House holiday decorating team under First Ladies Laura Bush and Michelle Obama, Burke is familiar with the inner workings of the most well-known home in America. Join us and get inspiration for the holiday season!

\$75 Friends of the Gardens Associates; \$150 Guests

THE ORCHIDS OF SELBY GARDENS

Orchids were central to the founding goals of Selby Gardens. The three senior scientists tasked with establishing the Gardens as a research institution were orchid botanists (Drs. Calaway Dodson, Carlyle Luer, Kiat Tan). Since Selby Gardens volunteers and staff began building the gardens' collection in the early 1970s, more than 12,500 accessions (samples) of documented live plants have become part of our knowledge of plant history. The living collection is a scientific resource. It also provides source material for programs of education, conservation and horticultural display. Here are just a few of the rare collection plants that are integral to tree canopy ecosystems in supplying oxygen, food and shelter for a surprising array of animals.



| | |
|---|---------------------|
| Specimen Name Campylocentrum tyrridion (ribbon orchid) | |
| Location Bladen Nature Reserve, Belize | Date 2015 |
| NOTES Assistant Director of Horticulture Angel Lara collected this orchid while trekking through the forest during an expedition in Belize. These miniature leafless orchids are very difficult to spot in the wild. | |



| | |
|---|---------------------|
| Specimen Name Coryanthes picturata (bucket orchid) | |
| Location Belize, Cayo District | Date 2014 |
| NOTES Collected by Ella Baron of Caves Branch Botanical Gardens. Surely one of the most bizarre of the orchid flowers, they are exquisitely designed to lure bees to effect pollination through fragrance and traps. | |



| | |
|---|---------------------|
| Specimen Name Rhyncholaelia digbyana (orchid of the Virgin) | |
| Location Belize | Date 1985 |
| NOTES This plant was donated to Selby Gardens in 1985, and is maintained on a beautiful mount. The large, frilly flowers are delightfully fragrant. This is the national flower of Honduras. | |



| | |
|--|---------------------|
| Specimen Name Dinema polybulbon | |
| Location Belize, Cayo District | Date 2015 |
| NOTES Collected by Ella Baron of Caves Branch Botanical Gardens in a remote location. This small epiphyte grows in mats on tree trunks and has flowers less than 1 inch wide. | |

| | |
|---|---------------------|
| Specimen Name Epidendrum galeottianum | |
| Location Belize, Cayo District | Date 2001 |
| NOTES Collected by Bruce Holst and former Horticulture Director Nancy Edmondson on a 2-week canoe trip down the Macal River in 2001. For some reason in 2014 the flower structure took on the shape of a miniature ferris-wheel. | |



TREASURED TREES

Selby Gardens is home to a remarkable collection of tropical trees.

While best known for its world famous collection of epiphytes, Selby Gardens is graced with many rare and large specimen trees, including more than a dozen that are particularly revered. Some are known as Legacy Trees because they were planted by William and Marie Selby. Among those are the banyans which create a canopy for the Children's Rainforest Garden and provide a backdrop for thousands of photographs of visitors posing among the massive roots and trunks.

Others, known as Sacred Trees, were planted later, but have attained iconic status and are protected because they are so unusual or large that they cannot be replaced. These include Florida State Champion Trees and trees that provide a perching area for eagles and nesting space for osprey. Many of the Sacred and Legacy Trees are pinpointed on the map below. Use it on your next visit to gain a new appreciation of Selby's treasured trees.

1. *Bombax ceiba* – These towering, flowering trees, also known as red silk-cotton trees, provide nesting areas for osprey and perches for eagles. A third can be found along the walkway south of the Christy Payne Mansion.

2. *Ficus lutea* – This giant-leaved fig is a Florida State Champion Tree.

3. *Ficus religiosa* – This iconic, cherished tree planted in the 1970s blew over in a storm but was rescued through a massive staff and community effort in 2001. Also known as the Bo, or Bohdi tree, it is the type of tree under which Buddha meditated and achieved enlightenment.

4. *Ficus aurea* – These huge native to Florida figs are also known as strangler figs.

5. *Agathis robusta* – One of Selby's largest and most robust trees can be found just northwest of the Selby House.

6. *Araucaria cunninghamii* – This large, unusual tree has many years of growth.

7. *Pinus elliottii* – These are the last of the slash pines that likely dominated the property hundreds of years ago.

8. *Ficus altissima* – The "council tree" forms a canopy over the path adjacent to the Succulent Garden.

9. *Phoenix sylvestris* – Framing the Hudson bayou dock, these wild date palms trace their history back to the 1930s when the Selbys planted them. A third can be found near the Wedding Pavilion.

10. *Ficus macrophylla* – The Moreton bay fig is a favorite with visitors because of its extensive buttress roots; this tree was planted by the Selbys.

11. *Ficus microcarpa* – Commonly called the Cuban laurel, these banyans are some of the most iconic of the trees at the Gardens and were planted by the Selbys.



SUPER HERO

OF SELBY GARDENS

Volunteer Wade Collier documents Selby Gardens' research from Florida to Brazil



At any time of the day or night you might find Dr. Wade Collier in the Selby Gardens greenhouses, camera in hand, photographing plants. As a volunteer in the Botany Department, Collier has the unique role of scientific photographer, documenting the Gardens' abundant collection of tropical plants and the field work of its scientists from the Everglades to Belize and Brazil.

A MEETING OF THE MINDS

He started volunteering at Selby Gardens in October 2011 at the urging of his wife Carol, who had been a volunteer in the Botany Department for eight years. Carol was already a key volunteer in the herbarium, assisting with many aspects of preserved plant curation, which included the massive move of specimens to our current location in 2005. Initially Collier applied his photographic skills to a variety of projects at the Gardens, but about four years ago his volunteer career took on a new and intense direction when he met Dr. Antonio Toscano de Brito, curator of Selby Gardens' Orchid Research Center.

"Wade was looking for a challenge and I was looking for someone to challenge 'Dr. Picky'—that is how I am gracefully known in the Botany department," Toscano recalls. "Since that day, Wade and I have become not only travel companions (traveling six times to Brazil together), but also very good friends."

Though the self-effacing volunteer downplays his role in facilitating the institution's botanical research, describing his role as "doing the technical stuff so Toscano is freed up to do the important work," Collier's background gives him both the insight and the technical skills to be a key part of the entire botanical and horticultural team.

As a retired biology professor with a doctorate in medicine, Collier understands the need for precise

research and documentation to enable publication in scientific journals. His technical photographic skills were honed over half a century, starting with photographing human organs for his father, who was a pathologist.

A PASSION FOR PHOTOGRAPHY

Now those skills help botanists at Selby Gardens and around the world to examine a variety of plants in detail, for example, micro-orchids as small as a baby's fingernail that Toscano has discovered in Brazil.

"We have to show every part of the flower, and that involves using a special lens and a special technique called stack shot photography," Collier explains, in which 25 separate images are fused together with a computer program to create the sharpest possible focus and capture detail previously only seen through a microscope. Photographing just one of the tiny orchids can take several hours.

"I like to say that we have become Selby's 'Batman and Robin' of the orchids," Toscano says. "I feel a bit embarrassed in calling him 'Robin' because, in fact, Wade is a true Batman! He is always ready to help with any matter, not only with photography, editing images for publications and other related business, but also with family and personal matters. He never says 'no' and is always prepared to listen."

Another part of Collier's role is documenting Selby Gardens field work in Florida, like the ongoing rescue mission at Fakahatchee Strand Preserve State Park to save the *Tillandsia utriculata*, giant air plants threatened by the introduced Mexican weevil. Between trips he photographs the plants in the greenhouses, whenever they come into bloom, whether that is at 10 in the morning or 10 at night.

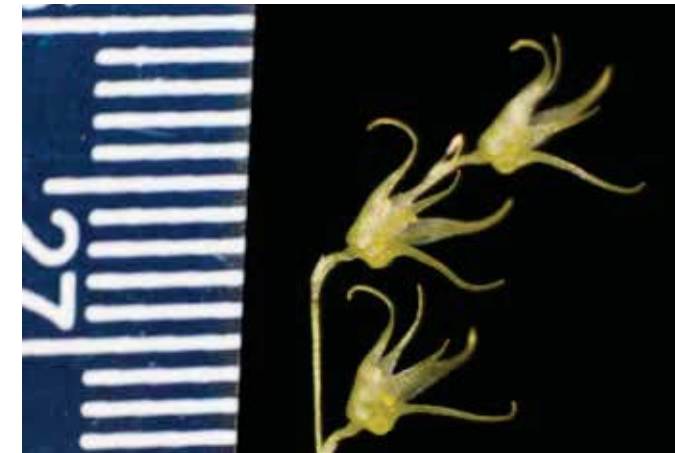
Collier says he spends about two hours on the computer for every hour he spends taking

photographs, editing and enhancing the images. Then his wife takes over. "Carol is the brains of the operation," he says with characteristic modesty. "She does the important stuff—tagging it by name, family, where it's from, when it was photographed—all the tedious stuff that is so important to science and all the things which I don't understand. To me it's a pretty plant, but people like Carol and Toscano and Bruce (Holst, director of Botany) want to know everything about it."

He laughs that his work will never be finished because the botanists want a photographic record of every plant on the premises. "God is creating them faster than we can photograph them," he says of Selby Gardens' ever-expanding collection.

NUMBERS TELL THE STORY

Together, Wade and Carol Collier gave the Gardens more than 1,700 hours of their time in 2016 alone. Wade has completed 4,000 hours of volunteer service at Selby Gardens and was awarded a Lifetime Achievement Award bestowed by the



Anathallis dryadum photographed next to a ruler in millimeters gives an idea of the tiny scale Collier works at. (Photo Credit: W. Collier & A. Toscano de Brito)

Corporation for National and Community Service and the President's office. Holst acknowledged the award during the Annual Volunteer Appreciation Dinner in April 2017.

"Without a doubt, Wade Collier is one of Selby Gardens' greatest assets," Holst said. "He is the main photographer of our living collection, carefully documenting the diversity of plants in the greenhouses no matter the time of day. If a unique plant blooms at night, he is always willing to make a special trip to photograph it. He has accompanied staff on field trips from Florida to Brazil to capture photos of plants and people, resulting to date in tens of thousands of images.

"On top of it all, he is one of the friendliest, wittiest and most selfless people you will ever meet. It is difficult to imagine life at Selby Gardens without the Colliers."

Wade Collier,
DISPATCHES FROM BRAZIL
Occasional email briefs are sent to Sarasota during field expeditions. Here are a few notes from Collier's travelogues last year.

6/27/16:

We had a full day Wednesday when we went to the second tallest mountain in this part of the world, the Pico das Almas. Toscano had some target orchids that he wanted, and therefore he hired a guide who knew where to go to get what he wanted. At first the walk was rather easy (isn't it always, at first!). But then the trek became more arduous.

From time to time Toscano would find what he wanted, and he would take representative samples. Meanwhile, I tried to photograph. We reached the top about lunch time, about three hours after we started.

After lunch the real orchid hunt began, with Toscano leading us through narrow chimneys, examining the rock walls as we went. We soon found ourselves in a cave-like passageway that we had to wiggle through to get out, as there was no going back. I was happy to see blue sky at last!

7/7/16:

Not being content to making me climb a mountain, Toscano is seeing how well I can adapt to the Antarctic winds that have returned to Curitiba.

It was 37° this morning. I'm not worried as the temperature should rebound to a balmy 45° after 1:00. Maybe we'll have lunch on the terrace.

3/13/2017:

We returned to the Pico das Almas for a day in the field. We didn't climb the peak again, as we did that last year, but rather we botanized in several wooded areas that lie at its base. We could see where the fires were last November, but, as is the usual case, regrowth was occurring. These small remnants of forests have large numbers of bromeliads, of various sizes and types. These plants were growing at different heights, from knee level to up in the canopy, and many had flower spikes with flowers. Unfortunately, cattle is allowed in these areas, and the usual degradation is occurring...

Yesterday we went into the field joined by two of Toscano's colleagues. Our first stop was at a cacao farm near the small town of Colonial. The cacao trees were growing amongst other trees, such as rubber trees, along the side of a very steep hill. Of course, there were vanilla plants to accompany the chocolate. For lunch, we lived off the land: Yes, they were delicious, organic and FREE.

CAMP LOOKOUT

discover yourself

At Selby Gardens' annual summer camp, youngsters are introduced to nature and basic concepts of plant growth and care, as well as environmental conservation. While adult instructors guide the day, middle and high schoolers volunteering as counselors wield great influence on their charges. Here we review some of their favorite things about Selby Gardens, from plants to how a youthful appreciation of the natural world provides inspiration and motivation.



Cade



Zoe



William



Grace



Mary



Chloe



Kique

CADE S., 17, Suncoast PolyTechnical High

Favorite Tree: The Banyan Trees. The roots are great for climbing (and for playing zombie tag with the campers).

Years volunteering: Three years.

Lessons learned: What I want the kids to have, even if they don't understand all the facts about conservation, is a love of nature. That basic feeling will translate into their future lives.

ZOE N., 16, Booker High School

Favorite Plant: The Bo Tree. I love the legend of the buddha and the sound the leaves make when the wind blows, as well as the technical purpose of how the leaves are constructed.

Years here: A camper since age 7, Zoe became a junior counselor five years ago.

Lessons learned: When I was younger camp influenced me a lot. It brought an awareness that not everything is promised forever, and if you want something to change, you have to do something about it.

WILLIAM K., 16, Pineview School

Favorite Plant: Rainbow Gum Tree; I love all the different colors and layers.

Years volunteering: Three years

Lessons learned: I like seeing the curiosity a child has when they learn something new. My biggest lesson is that plants grow, but it takes time, just like ourselves. You have to mature and nurture a life.

GRACE A., 15, Westover School

Favorite Plant: The Banyan tree - The roots!

Years here: I've been coming here my whole life.

Lessons learned: I like to see the kids climbing, having fun and enjoying nature.

MARY D., 15, Cardinal Mooney High School

Years here: First year volunteering

Lessons learned: I like to see everyone enjoying the outdoors and gaining an appreciation for plants.

CHLOE S., 16, Sarasota High School

Favorite Plant: Loofah Plant - everyone thinks they're from the ocean.

Years volunteering: Four years; Selby is part of me.

Lessons learned: I hope campers learn more about cherishing plants and animals and that you have to take care of things or eventually there won't be anything to appreciate.

KIQUE P., 12, Sarasota Military Academy

Favorite Plant: Hot lips - they're bright and red.

Years volunteering: First year, but I've been coming here since I was five.

Lessons learned: Everything comes from tiny seeds. They can grow to be huge trees or other plants, but they all start out small.

RECOMMENDED READS

Staff from our Education Department offer suggestions for informative and entertaining reading connected to our mission to further an understanding and appreciation of plants.

THE HIDDEN LIFE OF TREES by Peter Wohlleben

A German forester who had been managing woodlands for commercial lumber production begins to see trees through the eyes of eco-tourism visitors to his forest, and he rediscovers his childhood love for, and fascination with nature. - Tracy Calla, School & Family Programs Manager

LAB GIRL by Hope Jahren

This is a story of a female scientist who loves trees and soil and labs. Her authenticity is what struck me - from her personal struggle with mental illness, her unique relationship with her lab partner and her constant struggle to find funding to conduct their research to her path towards motherhood. I loved her writing; funny, candid and truthful, at times I even felt her fear. My favorite parts were her scientific descriptions about and her reverence for trees! - Jeannie Perales, Director of Education & Visitor Engagement

GODS, WASPS, AND STRANGLERS by Mike Shanahan

The author is a man in love, nay obsessed, with figs. Decades of field work (he has a Ph.D. in fig biology) are translated into a fascinating, joyful, and eminently readable account of the genus Ficus. Botany, mythology, history, and ecology combine with the author's lyrical voice to make this short read a memorable one. Get figgy with it! - T. C.

ORANGES by John McPhee

Typical of John McPhee - easy, but fascinating reporting language on a subject that might not seem diverse at first. A little bit of everything orange! - Laura Avery, Manager of Classes and Exhibits

FIFTY PLANTS THAT CHANGED THE COURSE OF HISTORY by Bill Laws

This book reads like a who's who amongst plants; a natural history showcasing 50 plants that have significantly influenced history. Each botanical super-star is beautifully illustrated and accompanied by fun facts about their role in society, economics, medicine, within your garden and upon your plate. - J.P.



little sprouts club

- October 5-7, 2017
- November 2-4, 2017
- December 7-9, 2017
- January 4-6, 2018

Join us monthly from 10:30 to 11:30AM in the Ann Goldstein Children's Rainforest Garden. Preschool-aged children and their families are invited to explore Fun, Fabulous Florida! Celebrates the treasures of the Sunshine State, exploring different Florida plants, animals, and places through sensory stations, themed arts and crafts, science activities, story time and free play.



CALENDAR

An overview of the major events at Selby Gardens from September through early 2018. Advance tickets available at selby.org.



ORCHID EVENINGS
WEDNESDAYS, OCT. 18 - NOV. 22
6-9 PM

Experience the Orchid Show in a whole new light during these orchid-inspired cocktail receptions that include live music and food and drink tastings.

\$60 Members, \$75 Guests



WINE & DESIGN
OCT. 19, NOV. 8 & DEC. 6 • 6-8 PM

Floral design workshops hosted by local floral experts. Enjoy a beautiful evening on the bayfront with food and wine included.

OCT. 19: Orchid Showcase (Angel Lara, Selby Gardens)

NOV. 8: Farm to Table (Ian Prosser, Botanica)

DEC. 6: Holiday Splendor (Dion Roberts, Beneva Flowers)

\$115 Members; \$125 Guests



"SEX, LIES, AND ORCHIDS"
with Dr. Antonio Toscano de Brito
WED., OCT. 18 • 11 AM

Series Chairs: Jean Weidner Goldstein, Teri Hansen and Margaret Wise

\$150 Guests; \$75 Friends of the Gardens Associates

SERIES SPONSOR  EVENT SPONSOR 



GARDEN MUSIC SERIES
SUNDAYS, OCT. 22 - NOV. 12 • 1-3 PM

Join us for four Sundays of outdoor concerts on the Great Lawn.

OCT. 22: The Curious Bedfellows

OCT. 29: Renesito from Cuba

NOV. 5: Perlman Music Program/Suncoast*

NOV. 12: Bird Tribe

*Indoors at Michael's on the Bay



Spooktacular
SUNDAY, OCT. 29 • 10 AM-NOON

This playful, family-friendly event includes trick or treating as well as frightening (but not too scary) options for older children. Come in costume!



MEMBER'S DAY
SATURDAY, NOV. 4 • 9 AM-2 PM

Annual member meeting and plant sale.



LIGHTS in BLOOM
DEC. 21 - 30 • 6-9 PM

In its 14th year, Lights In Bloom has become a tradition for residents and visitors to celebrate the holiday season in Sarasota among more than one million lights.

Selby Experience, \$100 (Dec 23 only)

\$20 Members; \$25 Guests; Children ages 5 - 12

\$7.50; Kids under 5 Free

Groups of 25 or more \$20pp



NEW YEAR'S EVE
SUNDAY, DEC. 31 • 8 PM-1 AM

Marie Selby Botanical Gardens is proud to present Sarasota's most sophisticated black tie New Year's Eve experience, with a private tour of Lights In Bloom, a five-course dinner, fireworks and entertainment at Michael's on the Bay.

\$250 per person

SPONSOR:
 THE MAGAZINE



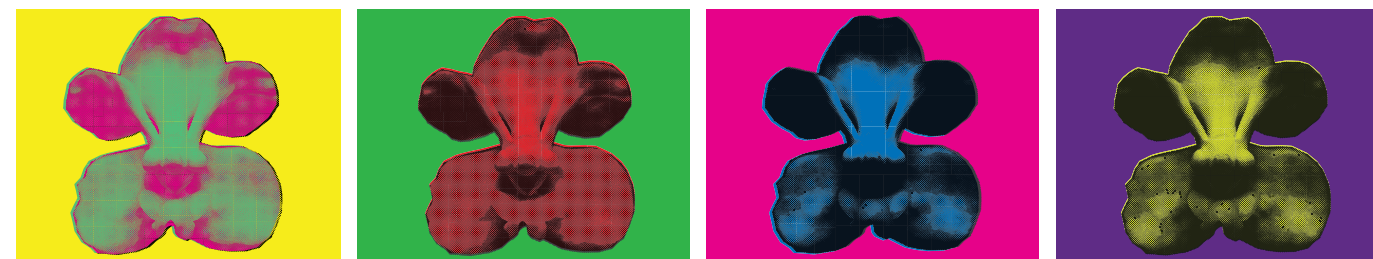
BROMELIAD TREE SALE
THURSDAY, JAN. 4 • 11 AM-3 PM

Several hundred bromeliad plants that made up the Bromeliad Holiday Tree will be available for purchase.

MARIE SELBY BOTANICAL GARDENS
Presents

THE ORCHID BALL 2018

Washol's Floral Playground



SATURDAY, FEBRUARY 10, 2018

HOSTED BY:

Liebe Gamble - Katie Hollingsworth - Ashley Kozel - Emily Stroud

LEAD SPONSOR: 

For sponsorship and table information, email orchidball@selby.org

WEDDINGS, CORPORATE & PRIVATE EVENTS

An urban oasis on the beautiful Sarasota Bayfront, the Gardens offer a stress-free environment conveniently located near hotels and resorts, and close to downtown shopping, dining and business facilities.

MICHAEL'S ON THE BAY offers a variety of beautiful indoor and outdoor spaces that can accommodate a full range of events, from intimate gatherings to corporate meetings. Michael's on the Bay at Selby Gardens is Sarasota's premiere indoor event facility.

- 4,800 sq/ft
- Panoramic sunset and bay views
- 250 seated/350 theater-style
- Equipped with full multimedia and A/V options.

Onsite catering at all facilities is provided by Michael's On East, the most respected event vendor in the region.

For more information, please contact Michael's On East Catering Department at 941-366-0007 or email reservations@bestfood.com.

MICHAEL'S
ON EAST

COMMUNITY CLASSES

Marie Selby Botanical Gardens offers a wide variety of classes taught by experts in their field. Whether you want to brush up on your watercolor skills or create a scrapbook, if you want to get your hands dirty planting orchids or improve your photography, or even if you just want to start your day with relaxing yoga, there's a class for you.

ART CLASSES



Beginners Only Watercolor

Session I: Sept 11, 18, 25
Session II: Oct 9, 16, 23
Mon, 10:30 am – 2:30 pm
 Instructor: Carolyn Merenda
 Class Fee per Session: \$140 (Members \$125)

Intermediate Watercolor

Session I: Sept 12, 19, 26
Session II: Oct 10, 17, 24
Session III: Nov 7, 14, 28
Session IV: Dec 5, 12, 19
Tue, 10:00 am – 2:00 pm
 Instructor: Carolyn Merenda
 Class Fee per Session: \$140 (Members \$125)

Advanced Watercolor

Session I: Nov 6, 13, 27
Session II: Dec 4, 11, 18
Mon, 10:30 am – 2:30 pm
 Instructor: Carolyn Merenda
 Class Fee per Session: \$140 (Members \$125)

NEW! Painting a Floral Still Life in Watercolor

Thurs, Sept 28, 10:30 am – 2:30 pm
 Instructor: Joyce Ely Walker
 Class Fee: \$65 (Members \$50)

NEW! Portraits in Watercolor

Mon, Oct 2, 10:30 am – 2:30 pm & Tues, Oct 3, 10:00 am – 2:00 pm
 Instructor: Carolyn Merenda
 Class Fee: \$105 (Members \$85)

Print the Gardens

Oct 5 & 6, 10:00 am – 3:00 pm
 Instructor: JoAnn Migliore Campisi
 Class Fee: \$90 (Members \$70)
 Materials Fee: \$15 (pay instructor)

A Natural Composition-Mixed Media Nature Collage

**Oct. 13, 20, 27
 10 am -12:00 pm**
 Instructor: Katya De Luisa
 Class Fee: \$105 (Members \$90)

Holiday Cards in Watercolor

Mon, Oct 30, 10:30 am – 2:30 pm
 Instructor: Carolyn Merenda
 Class Fee: \$65 (Members \$50)

Gelli Plate Printing

Thurs, Nov 2, 10:00 am – 3:00 pm
 Instructor: JoAnn Migliore Campisi
 Class Fee: \$65 (Members \$50)
 Materials Fee: \$5 (pay instructor)

NEW! Sumi-e and Haiku - Painting and Poetry

Wed, Nov 8, 15, 29, 10:00 am – 2:00 pm
 Instructor: Marcy Chapman
 Class Fee: \$140 (Members \$125)
 Materials Fee: \$15 (pay instructor)

The Art of Plein Air

Nov 9 & 10, 10:00 am – 1:00 pm
 Instructor: Joyce Ely Walker
 Class Fee per Session: \$215 (Members \$195)

NEW! Festive Holiday Wreath

Thurs, Nov 30, 10:00 am – 3:00 pm
 Instructor: Marilyn R. Shelley
 Class Fee: \$65 (Members \$50)
 Materials Fee: \$25 (pay instructor)

NEW! Orchids – Up Close & Personal

Dec 6, 7 & 8, 12:00 pm – 5:00 pm each day
 Instructor: Olivia Braidia
 Class Fee: \$395 (Members \$350)
 Materials Fee: \$35 (pay instructor)

HEALTH & DISCOVERY



Seasonal Yoga Pass

Valid Sept 11 through Dec 27, 2017
 Instructor: Michelle Roy
 Pass Fee: \$150 (Members \$110)

Yoga in the Gardens

Session I: Sept 11, 18, 25 & Oct 2
Session II: Oct 9, 16, 23, 30
Session III: Nov 6, 13, 20, 27
Session IV: Dec 4, 11, 18 & Wed., Dec. 27
Mon, 9:00 – 10:00 am
 Instructor: Michelle Roy
 Class Fee per Session: \$75 (Members \$55)

NEW! A Journey to Mindfulness

**One-hour classes: Sept 6, Oct 4, Nov 1 or Dec 6
 9:00 – 10:00 am**
 Instructor: Michelle Roy
 Fee per Class: \$20 (Members \$15) each

NEW! Feng Shui Your Writing Style Retreat

Friday, Nov 3, 10:00 am – 3:00 pm
 Instructor: Gail Condrick
 Class Fee: \$65 (Members \$55)

HORTICULTURE

NEW! Care & Mounting of Epiphytes

Wed, Sept 13, 11:00 am – 1:00 pm
 Instructor: Addie Worth
 Class Fee: \$50 (Members \$35)
 Mounting Fee: \$10 average depending on size of plant.

Raising a Show-Quality Orchid

Friday, Sept 29, 11:00 am – 1:00 pm
 Instructor: Barbara Schmidt, American Orchid Society Education Committee Member
 Class Fee: \$50 (Members \$35)

Growing Orchids in SW Florida

Sat, Sept 30, 10:00 am – 12:00 pm
 Instructor: Monroe Kokin
 Class Fee: \$50 (Members \$35)

NEW! Not Just Another Pretty Face: What Makes an Orchid an Orchid?

**Histories, Mysteries and Orchid Mania
 Thurs, Oct 19, 11:00-1:00 pm**
 Instructor: Tracy Calla
 Class Fee: \$50 (Members \$35)



Potting & Mounting Orchids

Wed, Oct 25, 11:00 am – 1:00 pm
 Instructor: Angel Lara
 Class Fee: \$50 (Members \$35)
 Potting Fee: \$10 average depending on size of plant.

NEW! Explore Coastal Mangroves and Seagrass Beds on the Carefree Learner Boat

Session I: Thurs, Oct. 26, 11 – 1:30 pm
Session II: Thurs, Dec 14, 11 – 1:30 pm
 Instructors: Dr. Megan Ehlers, Capt. Randall Patterson and Darcy Young
 Class Fee per Session: \$35 (Members \$25)

Orchids 101

Sat, Dec 2, 10:00 am – 12:00 pm
 Instructor: Monroe Kokin
 Class Fee: \$50 (Members \$35)

PHOTOGRAPHY



Adobe Lightroom

Thurs., Sept 21, 1:30 – 4:30 pm
 Instructor: Daniel R. Perales
 Class Fee: \$75 (Members \$55)

NEW! Creating Natural Portraits with Photography

Fri, Sept 29, 1:30 – 4:30 pm
 Instructor: Daniel R. Perales
 Class Fee: \$75 (Members \$55)

Visual Poetry

Thurs, Oct 12, 10:00 am – 1:00 pm
 Instructor: Perry Johnson
 Class Fee: \$75 (Members \$55)

Exposed: Behind-the-Scenes Photography

Tues, Oct 17, 2:30 – 5:30 pm
 Instructor: Daniel R. Perales
 Class Fee: \$85 (Members \$65)

Tripod Tuesdays

Session I: Tues, Oct 24, 9:00 – 10:00 am
Session II: Tues, Nov 14, 9:00 – 10:00 am
 Fee per Session: \$20 (Members \$15)

20 Quick Tips to Improve Your Photography

Fri, Dec 1, 10am – 1pm
 Instructor: Perry Johnson
 Class Fee: \$75 (Members \$55)

CLASS REGISTRATION POLICIES

- **REGISTRATION PROCEDURES! (1)** Register online at www.selby.org or **(2)** in person at Selby's Welcome Center.
- In the event that a class is cancelled by Selby Gardens, students will receive a full refund. Student cancellations made less than 72 hours prior to class time are not entitled to a refund nor class credit.
- Material lists are available online and can be emailed or mailed upon request.
- Please visit our website for updates and additional information.
- Class sizes are limited - please register early.
- **Pre-Registration is required.** Tuition is due with registration. Pay online or use charge, check or cash in our Welcome Center.
- Registration fees are not prorated. If you do not attend any portion of class, your registration fee is forfeited.
- There are no make-up classes for students who miss a regular class session.
- Proceeds from classes support the Gardens.

EXHIBITIONS

AUGUST 12-SEPTEMBER 10

37TH ANNUAL JURIED PHOTO EXHIBITION

The 37th Annual Juried Photo Exhibit is on display through Sept. 8. Explore the scenes of Selby Gardens through the lenses of photographers.

JANUARY 7-28, 2018

RAINFOREST MASKS OF COSTA RICA

Save the date for the return of the Rainforest Masks created by the native Borucans of Costa Rica in this 14th annual display. Ticketed opening night

Current and upcoming exhibitions featured at Selby Gardens.



SPONSORED BY:



reception will be held from 5:30-7:30PM, Saturday, January 6, 2018.

BOTANICAL BRIEFINGS

NOVEMBER 15

ORCHID MANIA: THE ORCHID CRAZE IN VICTORIAN BRITAIN

with Dr. David Barry

Drawing on material from the Orchid Show, this talk will focus on the most prized exotic plants in Victorian Britain, which became the subject of a craze known as Orchid Mania. Discover the lengths to which nurserymen went to supply the orchid market and the fortunes the wealthiest collectors

These monthly lectures are held October through May. Participants are invited to join us in Michael's on the Bay (unless otherwise noted) to enjoy presentations on topics such as field work, ecosystems and exhibitions. Lectures are complimentary with admission (free to members), unless otherwise noted.



spent to secure the rarest specimens.

David Berry is the Assistant Director of Academic Affairs at the John and Mable Ringling Museum of Art. He is the guest curator of the Orchid Show in the Museum of Botany & the Arts.

DECEMBER 13

A BRIEF HISTORY OF BOTANICAL ART WITH PRESENTATION OF PAINTING PROCESS

with Olivia Braid

Botanical art is the oldest art form dating back nearly 40,000 years. Join Academy of Botanical Art Founder and Master Botanical Artist Olivia Braid for a brief look at botanical art through the



ages. Ms. Braid's talk will be followed by a ten minute film demonstrating her painting process from sketches to watercolor painting.

2018 JEAN & ALFRED GOLDSTEIN EXHIBITION SERIES

INTRODUCES



Flowers, c.1967
Williams College Museum of Art, Williamstown, MA: Gift of Tennyson and Fern Schach, Class of 1952 (84.72)
© 2017 The Andy Warhol Foundation for the Visual Arts, Inc. / Artists Rights Society (ARS), New York.

WARHOL

flowers in the factory

opens February 11, 2018

LEAD SPONSORS

Amicus Foundation • Betsy and Doug Elder • Gulf Coast Community Foundation • State of Florida, Department of State, Division of Cultural Affairs and the Florida Council on Arts and Culture

MAJOR SPONSORS

Gerri Aaron • Better-Gro • BMO Private Bank • The Doris M. Carter Family Foundation • Margot and Warren Coville • Drs. Andrew and Judith Economos • Gold Coast Eagle Distributing • Ernest R. Kretzmer • Flora Major • Katherine and Frank Martucci • Williams Parker Harrison Dietz & Getzen

SUPPORTING SPONSORS

Beverly and Bob Bartner • Linnie E. Dalbeck Memorial Foundation • Dart Foundation • Marcy and Michael Klein • The Woman's Exchange

ADDITIONAL SPONSORS

Teri A Hansen • Aimee and Chris Cogan/Maria and Allen Heise • Charlotte and Charles Perret

SELBY GARDENS' ANNUAL REVIEW

Our living museum brings global, living treasures to the public for study, conservation and enjoyment of the natural world. During the last twelve months this institution has reached children, families, educators and scientists near and far, imparting knowledge and information about the importance of plants and plant conservation. Here we highlight some of the accomplishments over the last year (July 1, 2016-June 30, 2017).* These milestones and successes are only possible through the contributions of our many members, volunteers and supporters.

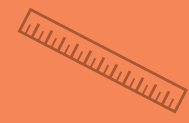
FACILITIES



212
parking spots upgraded



2
greenhouse generators installed

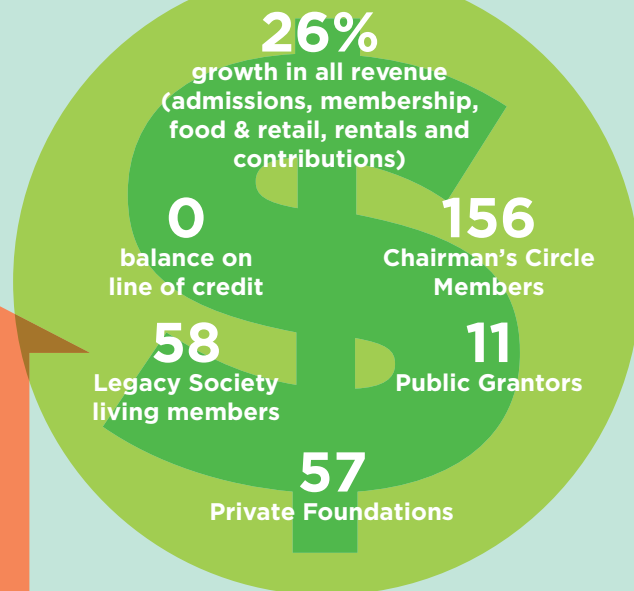


4,800
square feet available at the renovated Michael's on the Bay at Selby Gardens



4,560
Square Feet of Glass Cleaned in the Conservatory

SUPPORT



EDUCATION

6,000+ children served through school tours, classes and special events

227
classes with

2,023
adult students

EVENTS

115
private events and weddings

82
Selby Gardens events

*Financial figures represented are based on unaudited statements that are compiled by Fontana CPAs. An audit for Fiscal Year 2017 will be complete by September 30, 2017.

BOTANY



**Pabstiella calimanii* (Toscano & Luer), *Pabstiella recurviloba* (Toscano & Luer), *Conceveiba belizensis* (McPherson & Holst)

VOLUNTEERS

800+ volunteers on roster

64,138 hours donated

\$1.5 million
value of volunteer hours

Top Three Departments of Volunteer Service:
(hours)

Education - **18,936**

Horticulture - **13,925**

Botany/Research - **8,075**

RECOGNITION

1,059 press mentions

2 average number of articles per week

30+ outlets, including 5 international and 10 national publications

MEMBERSHIP & VISITATION

Total visitation (7/1/16 - 6/30/17)

201,526

OF MEMBERS

12,067
member households

18,172
individuals

9.13%+
from FY16

CHAIRMAN'S CIRCLE

(As of May 2017)

Sponsors

Mrs. Gerri Aaron
Amicus Foundation
Bank of America Client Foundation
Mr. and Mrs. Charles Barancik
The Calusa Fund
The Doris M. Carter Family Foundation
Community Foundation of Sarasota County
Mr. and Mrs. Warren J. Coville
Linnie E. Dalbeck Memorial Foundation Trust
Frederick Derr & Company
Mr. and Mrs. Norb P. Donelly
The Frank E. Duckwall Foundation, Inc.
Drs. Andrew and Judith Economos
Mr. and Mrs. Douglas C. Elder
Mr. Alfred R. Goldstein* and Mrs. Jean Weidner-Goldstein
Gulf Coast Community Foundation
The Jewish Federation of Sarasota-Manatee
Kimley-Horn and Associates
Koski Family Foundation
Mr. Ernest R. Kretzmer
Rita B. Lamere Memorial Foundation Trust
Dr. Elaine N. Marieb
Michael's On East
Mr. and Mrs. Wayne F. Seidl
Mr. Joseph A. Strosnik
The Harry Sudakoff Foundation
Ms. Pauline Wamsler Joerger
The Woman's Exchange

Co-Sponsors

Mr. and Mrs. James A. Armour
Cloud Termite and Pest Control
Dart Foundation
Mr. and Mrs. Robert N. Davies
Mr. and Mrs. William Gill
Ms. Teri A Hansen
Mr. and Mrs. Rod Hollingsworth
Mr. Dale S. Kammerlohr
Mr. and Mrs. Michael H. Klein
Mrs. Dorothea M. Lang*
Mr. and Mrs. Frank A. Martucci
Cornelia and J. Richard Matson
Mrs. Tatyana Mullin
PNC Wealth Management
Mr. Stuart Salenger
Schroeder-Manatee Ranch, Inc.
Roberta Leventhal Sudakoff Foundation
Mr. Peter G. Swain
Vaughn-Jordan Foundation
Mr. and Mrs. Thomas H. Watson
Williams Parker Harrison Dietz & Getzen

*Deceased

Patrons

Ms. Peggy C. Allen and Mr. Steve Dixon
Anonymous
Baltimore Orioles
Mr. and Mrs. Robert G. Bartner
The Chrisman Foundation
Dr. and Mrs. Kelvin Cooper
Ms. Carole Crosby and Mr. Larry Wickless
Friends of the Gardens - Selby Associates
Ms. Carolyn Keystone and Mr. James Meekison
Mr. and Mrs. William L. Knapp
Mr. Marvin Kocian
Ms. Cathy L. Layton and Mr. Pete Russell
Ms. Marietta F. Lee
Ms. Carol L. Miller
Ms. Virginia A. Miller
Mr. and Mrs. Thomas E. McInerney
Mrs. Evelyn S. Mink
Mr. and Mrs. Keith D. Monda
Vicki and Dillard Jeff Moore
Mr. and Mrs. Gregory T. Mutz
The Sybil A. Pickett Trust
Mr. and Mrs. David T. Peirce
Charlotte and Charles Perret
Mrs. Alice W. Rau
Mr. and Mrs. Zuheir Sofia
Mr. and Mrs. Elli Streit
Mr. and Mrs. Hobart K. Swan
The Swart Family Foundation
Ms. Marcia Jean Taub
Mr. and Mrs. William D. Tompkins
Dr. and Mrs. Frederick Wurlitzer

Benefactors

Mr. and Mrs. Richard R. Ackerman
Anonymous
Ms. J. Allison Archbold, Esq and Mr. Hugh J. Bettendorf
Mr. and Mrs. Robert G. Arthur
Mr. and Mrs. Michael R. Baker
Mrs. Libby Besse
Mr. and Mrs. William R. Bowles
Mr. and Mrs. Travis Brown
Mr. and Mrs. Frank A. Brunckhorst
Mr. and Mrs. Robert E. Carter
Mrs. Pattie B. Clendenin
Dr. Deborah E. Cohen and Mrs. Maxine Spitzer
Mr. and Mrs. C. Martin Cooper
Katie and Tom Cornell
Mr. John F. Cuneo Jr.
Mr. and Mrs. Howard R. Curd
Mrs. Bernice M. Davis
Mr. and Mrs. Neil P. DeFeo
Mr. Dan Denton
Mr. and Mrs. David Denton
Mr. and Mrs. James Dewey
Mr. James E. Duffy and Ms. Julie N. Baker

Mr. and Mrs. Chris Elser
Mr. and Mrs. Robert Essner
Mr. and Mrs. John E. Evans
Mr. and Mrs. Martin W. Faust
Mr. and Mrs. William T. Forrester
Ms. S. Marce Fuller and Mr. Lee De Ovies
Mr. and Mrs. William J. Gamble
Mr. and Mrs. Michael Gray
Mr. David A. Hagelstein and Mr. Stephen Heffron
Katie and Peter Hayes
Mr. and Mrs. Stephen L. Hazeltine
Mr. and Mrs. Robert P. Jackson
Carolyn and Bob Johnson
Mr. and Mrs. William R. Johnson
Dr. and Mrs. Joseph Kreit
Dr. and Mrs. William J. Lahners
Mr. Harry Leopold and Ms. Audrey Robbins
Dr. and Mrs. Bart H. Levenson
D. R. Long Foundation
Mrs. Sally Ruth Lucke-Elkes
Mr. and Mrs. Thomas B. Luzier
Mrs. Flora Major
Mrs. Nathalie W. McCulloch
Ms. Tre Michel and Mr. David Steiner
Barbara and Francis Misantone
Mr. and Mrs. Jonathan Mitchell
Mrs. Gloria Moss
Dr. and Mrs. Philip K. Nelson
Mr. and Mrs. James M. Oates
The Observer Group
The Patterson Foundation
Mr. Richard E. Perlman and Ms. Ellen Hanson
Mr. and Mrs. Peter S. Powers
Mr. Sandy Rederer
Ms. Rosemary A. Reinhardt and Mr. David P. Welle
Mr. and Mrs. Thomas J. Russell
Mr. and Mrs. Skip Sack
Mrs. Ina L. Schnell
Mr. and Mrs. Jeffrey B. Sedacca
Mrs. Betty A. Stewart
Drs. Laurey M. Stryker and Charles Stryker
Mrs. Lois Stulberg
Ms. Jessica Swift
Mrs. Sylvia M. Thompson
In memory of Paul van Antwerpen
Dr. and Mrs. Richard L. Van Buskirk
Ms. Emily A. Walsh
Mr. and Mrs. Gilbert Waters
Dr. and Mrs. John D. Welch
Ms. Michael Ann Wells and Mr. Dave E. Soltis
Mr. and Mrs. Daniel A. West
Ms. Janet Wettlaufer and Mr. Donald Miller
Mr. Martin J. Wilhelm
Mr. and Mrs. William T. Wise

Mr. and Mrs. Arthur M. Wood
Ms. Judith Zuckerberg and Mr. George M. Kole

INDIVIDUAL AND CORPORATE DONORS

(Recognizing gifts given between February and May 2017)

Mrs. Gerri Aaron and Mr. Marvin Albert
Ms. Kelly L. Abercrombie
Dr. Sepi Ackerman
Mr. Harold Ackenstein and Ms. June Simmons
Ms. Abigail K. Alcott
Ms. Peg Allen and Mr. Steve Dixon
Mr. P. William Forester and Ms. Lore Alvarez
Mr. and Mrs. David Anderson
Andrew and Judith Economos Foundation
Mr. Stanley Antonoff and Ms. Annette Kaplan
Mr. and Mrs. Charles D. Ashbrook
Ms. Laura K. Avery
Mr. and Mrs. Dan Bailey
Baird Foundation, Inc.
Ms. Maureen A. Ballinger and Mr. Gary Gallupe
Bank of America Matching Gifts Program
Mr. and Mrs. Charles Barancik
Mrs. Knickole E. Barger
Mrs. Barbara W. Bates and Mr. David B. Bates
Mr. and Mrs. Michael Baughen
Mr. John W. Bean and Mrs. Alexandra Jupin-Bean
Mr. and Mrs. Brian G. Beaudette
Ms. Isabel Becker
Mr. Emil Beran and Ms. Alice Beran
Mr. and Mrs. Louis M. Berninger
Mr. and Mrs. Jerry Birnbaum
Mr. Hugh B. Bishop
Mr. and Mrs. Charles L. Blackburn
Bliss Entourage, LLC
Mr. Ronald E. Boring
Mrs. Katherine K. Bosse
Mr. and Mrs. G. Thomas Bowers
Ms. Marie M. Bowman
Brenda L. Patten & Associates, P.A.
Mr. and Mrs. John C. Brill
Ms. Anne L. Brooks
Mr. and Mrs. Ronald L. Brotman
Mrs. Beverly J. Brown
Mr. and Mrs. Kevin P. Burke
Mr. and Mrs. David S. Burton
Ms. Nancy S. Bushnell and Mr. Victor G. Reiling, Jr.
Mrs. Niki J. Butcher
Mrs. Judy Cahn
Mr. Peter J. Calamaras

Mr. and Mrs. Kelly Caldwell
Mr. and Mrs. Darrin Campbell
Dr. John W. Carrier and Mr. Peter Rutherford
Mr. Charles H. S. Chapman
Mr. and Mrs. Douglas Christy
Mr. and Mrs. Vincent J. Cirigliano
Mr. and Mrs. Christopher Cogan
Mr. and Mrs. David A. Colson
Community Foundation of Sarasota County, Inc.
Mr. Robert E. Copeland
Mr. and Mrs. Andrew Crawford
Mrs. Kimiko T. Crawford
Mr. and Mrs. Philip Davison
Mrs. Mary E. Day-Karl
Mrs. Alice W. DeGregorio
Mrs. Helen Dennis
Mr. Charles W. Denny
Mr. Pasqual H. DiCianni
Mr. and Mrs. Richard Dickinson
Mr. and Mrs. Jaime V. DiDomenico
Mr. William T. Doherty
Mr. and Mrs. Ryan Donahue
Mr. and Mrs. Gary F. Dornbush
Mr. and Mrs. Dennis T. Dorton
Mr. and Mrs. Murray Duffin
Dr. and Mrs. Charles A. Eckert
Drs. Andrew and Judith Economos
Edward and Ruth Wilkof Foundation
Mr. and Mrs. Roger Effron
Ms. Catherine M. Elliott and Dr. Douglas R. Elliott
Mr. and Mrs. Chris Elser
Ms. Susan C. Erhart
Mr. and Mrs. Michael Evanoff
ExxonMobil Foundation
Fidelity Charitable Gift Fund
Mr. Howard Fishman
Mr. Ronald M. Fletcher
Florida Division of Cultural Affairs
Florida Native Plant Society - Serenoa Chapter
Mrs. Shirley Foss
Ms. Josephine E. Franz and Mr. Russell A. Gill
Ms. Eva Franziska
Mrs. Ursula J. Frey
Mr. and Mrs. David Frost
Mr. and Ms. Gary Gallupe
Mr. and Mrs. William J. Gamble
Mr. and Mrs. Paul E. Geck
Mrs. Jacqueline Gensemer and Mrs. Michelle Bryan
Mr. and Mrs. Scott Gibson
Ms. Karan L. Glaze
Mrs. Anne Guisewite
Gulf Coast Community Foundation
Ms. Lynn M. Halk
Mr. and Mrs. Philip N. Hammersley
Ms. Teri A Hansen
Mr. and Mrs. Joseph R. Hanson, Jr.

Ms. Elizabeth S. Harper
Ms. Christa M. Pfeiffer and Ms. Adele Harris
The Honorable Katherine Harris and Mr. Richard M. Ware
Ms. Kathryn Harvey
Mr. and Mrs. Michael Hassan
Mr. and Mrs. Karl Hauck
Mr. and Mrs. Harold A. Hayden
Mr. and Mrs. Peter J. Hayes
Mr. and Mrs. Mike Hays
Hazeltine Nurseries, Inc.
Mr. and Mrs. Gary Heard
Mr. and Mrs. Patrick Hebda
Mrs. Jo Hennelly
Dr. and Mrs. Kenneth D. Henson
Ms. Ruth E. Herrman and Ms. Martha Herrman
Mr. and Ms. Christian M. Hershman
Ms. Carol L. Hickler
Ms. Betty Himmel
Mr. and Mrs. Robert L. Hinkle
Mr. and Mrs. Allen R. Hochfelder
Mrs. Marion B. Hoercher
The Honorable Doug Holder
Dr. Sidney W. Holec
Mrs. Anita Holec
Mr. and Mrs. Rod Hollingsworth
Mrs. Elizabeth W. Holman
Mr. Bruce Holst and Ms. Susan Murphy
Mr. and Ms. Michael A. Horton
Mrs. Janette Howard and Mrs. Martha Manning
Mr. and Mrs. Joseph C. Howe
Mrs. Betty Jo Hunkele
Mr. Michael E. Hurney
IBM Corporation Matching Grants Program
Ideal Foundation
Mr. and Mrs. Frederick N. Indermaur
Dr. Albert G. Joerger
Mr. and Mrs. William R. Johnson
Ms. Julie S. Johnson
Ms. Michelle A. Johnston and Mr. Byron Williams
Mr. and Mrs. Jeff Jones
Mr. William R. Jones
Mr. and Mrs. Jack L. Jost
Mr. and Mrs. Peter J. Junger
Mr. and Mrs. Gregory J. Kalish
Ms. Annette Kaplan and Mr. Stanley Antonoff
Mr. and Mrs. Gary L. Kauffman
Mrs. Lisa Kauffman
Mrs. Elaine Keating
Keating Family Foundation
Mr. and Mrs. Bruce Keltz
Ms. Patricia Kennelly and Mr. Edward Keon
Mr. and Mrs. George J. Kertesz
Mr. James D. Meekison and Ms. Carolyn Keystone
Mr. and Mrs. Thomas L. Koski
Mr. and Mrs. John Krenicki

Mr. Ernest R. Kretzmer
Ms. Barbara S. Kuzmich
Lafayette College Alumni Association
Dr. Diana Lager
Ms. Brenda L. Landry
Dr. Gary D. Larson and Dr. John J. Mahoney
Mr. and Mrs. Barry A. Lawrence
Ms. Cathy L. Layton and Mr. Pete Russell
Mr. and Mrs. Melvin L. Lestock
Mr. and Mrs. Ronald D. Levin
Mr. and Mrs. Jerome Levy
Mr. and Mrs. Harold L. Libby
Mr. Philip Lindenbaum
Dr. Donald R. Lockett
Mr. and Mrs. William T. Logsdon
Mr. and Mrs. James M. Lombard
Mr. and Mrs. M. Stephen Long Jr.
Longboat Key Garden Club
Mrs. Stephanie R. Louis
Mr. and Mrs. Michael S. Lucy
Dr. and Mrs. Carlyle A. Luer
Mr. and Mrs. Thomas B. Luzier
Mr. Frederick L. MacNamara
Mr. and Mrs. Charles Maguire
Ms. Laverne Mahloch
Ms. Eloise Malinsky
Mr. and Mrs. Chris Malkin
Mrs. Maria-Elisabeth Mantius
Mr. and Mrs. Ralph L. Marchbank
Marcia S. and Michael H. Klein Foundation
Mr. Robert P. Martin
Mr. and Mrs. Frank A. Martucci
Mrs. Barbara R. Mask
Dr. and Mrs. Martin H. Max
Ms. Sally C. Maxwell
Mr. and Mrs. Justin D. McCarthy
Ms. Marge McClintock
Mr. and Mrs. William L. McComb
McComb Family Foundation
Dr. Marcia P. McGowan and Dr. John H. McGowan
Mr. Terrence McKee
Ms. Wilda Q. Meier
Mr. Benjamin L. Meluskey
Mrs. Margrit Messenheimer
Ms. Bella Meyer
Michael Saunders & Company
Michael's On East
Mr. and Mrs. John E. Miller
Mrs. Maria R. Molnar
Mr. and Mrs. John A. Moran
Morgan Stanley Global Impact Funding Trust
Mr. and Mrs. Michael L. Morris
Mr. and Ms. Jeffrey Morris
Mrs. Pamela R. Morris
Mr. and Mrs. Rudolf J. Mueller
Mr. and Mrs. Sean Natarajan

Mr. and Mrs. Charles W. Naylor
Mr. and Mrs. Thomas B. Newman Jr.
Ms. Virginia L. Newton
Mr. Carter Nicholas
Ms. Nicole C. Nicholas
Mr. and Mrs. Bengt Niebuhr
Mr. and Mrs. Kevin North
Ms. Carley Ochs
Mr. and Mrs. Stuart Ockman
Mrs. Fanchon A. Oleson
Miss Susan M. O'Neill
Mrs. Janet L. Osterholt
P.E.O. Chapter
Drs. Babette and James Pachence
Palm Aire Garden Club
Ms. Peg Papsch
Dr. Clio M. Parrigin
Mr. and Mrs. Kenneth R. Paslaqua
Paslaqua Charitable Foundation
Dr. and Mrs. Ashvin I. Patel
Ms. Geraldine Patneaude
Dr. and Mrs. Thomas Pecsvaradi
Mr. and Mrs. David T. Peirce
Dr. and Mrs. Joseph H. Penn
Ms. Julie Pepi and Mr. Christian M. Hershman
Mr. and Mrs. Charles M. Perret
Ms. Andrea Pilch
Ms. Gillette D. Piper
PNC Wealth Management
Mr. and Mrs. Peter S. Powers
Mr. and Mrs. Harold L. Libby
Ms. Rosemary A. Reinhardt and Mr. David P. Welle
Dr. Dennis A. Revicki and Ms. MaryLou Poe
Dr. Andrew Ricci and Ms. Jacqueline Muschiano
Ms. Carolyn S. Rippis
Rita B. Lamere Memorial Foundation Trust
Robert E and Marcia L Schaub Family Foundation
Mrs. Sally Robinson
Mr. Anthony J. Rolfes
Ms. Lorie Romano
Mr. and Mrs. Donald Ross
Mrs. and Dr. Carolyn G. Ruckle
Mr. and Mrs. Brian M. Rushton
Mr. and Mrs. Daniel F. Russell
Mr. and Ms. Gerald O. Russell
Mr. and Mrs. Bruce Saba
Mr. David J. Sales
Sarasota Half Marathon LLC
Ms. Lee C. D. Sax
Mrs. Nancy L. Schaeffer
Mr. and Mrs. Robert Schaub
Ms. Susan B. Schulman
Mrs. Barbara Schwallie
Mrs. Barbara M. Schwartz
Mr. Richard Secor
Mr. and Mrs. Jeffrey B. Sedacca
Mrs. Dorothy A. Sedlak

Mr. and Mrs. Keith Senglaub
Ms. Jane E. Shannon and Mr. Paul W. Lewis
Ms. Debbie L. Shoss and Ms. Libbie A. Sherman
Dr. and Mrs. Roger Sipson
Mr. and Mrs. Hudson Smith
Mr. and Mrs. Jack Sobel
Mr. and Mrs. Martin Sobel
Ms. Vee St John
Mr. and Mrs. James W. Steffke
Mr. and Mrs. Paul C. Steinwachs
Mr. and Mrs. Robert N. Stern
Mr. and Mrs. John S. Stipp
Mr. Richard L. Street
Mr. and Mrs. Robert S. Stroud
Drs. Laurey T. and Charles Stryker
Mrs. Lois Stulberg
Mr. and Mrs. Brian Sullivan
Mrs. Pam Sullivan
Sun Bulb Company, Inc.
Mr. and Mrs. Michael T. Svirsky
Mrs. Marsha Svirsky
Mr. and Mrs. Adrian Swain
Mrs. Anne O. Swain
Ms. Jessica Swift
Ms. Sylvia B. Temmer
The Alfred and Ann Goldstein Foundation, Inc.
The Benevity Community Impact Fund
The Doris M. Carter Family Foundation
The Jewish Federation of Sarasota-Manatee
The Observer Group
Mrs. Mary H. Theobald
Mr. and Mrs. John Tolpa
Mrs. John Tolpa
Mr. William Tomczyk and Ms. Deborah A. Tomczyk
Mrs. Patricia R. Toms
Vanguard Charitable
Mr. and Mrs. David Verinder
Dr. and Mrs. Thomas A. Vest
Mrs. Marjorie M. Wack
Mrs. Marilyn Watsey
Mr. Alfred R. Goldstein and Mrs. Jean Weidner-Goldstein
Mr. and Mrs. Douglas Weiss
Mr. and Mrs. R. Elton White
Mr. Ralph Wilkinson
Mr. Richard Wilkof
Mr. and Mrs. John Wilson
Ms. Gretchen L. Wilson
Mr. and Mrs. Gene K. Wineland
Mr. and Mrs. William T. Wise
Wood, Seidl & Anderson, PA
Mr. and Mrs. Edward Yellin
Ms. Marla Zipkin

GIFTS IN KIND

(Recognizing gifts given between February and May 2017)
Mr. and Mrs. Rick Boss
Mr. and Mrs. Stephen M. Bull
Ms. Kari Ellingstad and Mr. Ari Weinstein
Mr. Eric Fontana
Fontana CPAs
Ms. Donna Hall
Mr. and Mrs. Stephen Hazeltine
Hazeltine Nurseries, Inc.
Serbin Printing
Mr. Ari Weinstein and Ms. Kari Ellingstad
WUSF Public Media

TRIBUTES

(Recognizing gifts given between February and May 2017)

Tree Dedications

In Memory
in memory of Mr. Michael Rosenblum
Mr. Harry Rosenblum and Ms. Lisa Clift

Tribute Benches

In Honor
in memory of Mrs. Carrie Carnes-Kemper
Mr. Robert A. Kemper
in memory of Dr. Vildan Mullin
Mrs. Tatyana Mullin

Memorial Contributions

in memory of Dr. Alan R. Treiman
Ms. Susan B. Schulman
in memory of Mr. Bill Carmichael
Mr. and Mrs. Joseph Hurwitz
Mr. and Mrs. James Martin
in memory of Mr. Stephen V. Wilberding
Mr. and Mrs. Kenneth J. Abt
Ms. Judith D. Zuckerberg and Mr. George M. Kole
in memory of Ms. Annette Steiner
Mr. Dale Granata
in memory of Ms. Marilyn Rhiengold
Mr. and Mrs. Darren J. Katz
in memory of Ms. Shirley Schaeffler
Ms. Elizabeth Grenham
in memory of Ruth E. McCarthy
Mr. and Mrs. Justin D. McCarthy
in memory of Sydney Louis
Mrs. Stephanie R. Louis
in memory of Ms. Cay Correll
Ms. Elizabeth Gay

Honorarium Contributions

in honor of Betty Lindenberg's 100th Birthday
Ms. Peggy Barrett
in honor of Carol Kristan's Birthday
Mr. and Mrs. John J. Kristan
in honor of Charles E. Kiblinger
Mr. and Mrs. Robert L. Keele
in honor of Dr. Deborah E. Cohen
Ms. Deborah Davies and Mr. Marc Lowenstein
in honor of Jennifer L. Rominiecki's 2nd Year at Selby
Ms. Teri A Hansen
in honor of Mr. Nevin C. Thomas
Mrs. Pauline Wamsler Joerger
in honor of Mr. Roger Capote
Ms. Teri A Hansen
in honor of Mrs. Beverly Bartner
Ms. Joan Golub
Ms. Nancy Markle
Dr. and Mrs. Russell H. Samson
in honor of Ms. Cathy L. Layton and Mr. Stephen D. Russell
Mrs. Roxanne Jerde
in honor of Ms. Teri A Hansen's birthday
Dr. and Mrs. Richard A. Conroy
Mrs. Tracy Knight
Mr. and Mrs. Dan Bailey
Ms. Lois Stulberg
Mrs. Marcia Jean Taub
Mr. and Mrs. Richard T. Segall
Dr. and Mrs. Joseph G. Thro
Mr. and Mrs. Joseph Mendels
Mr. and Mrs. Gerry Lubin
Mr. and Mrs. Skip Sack
Mrs. Pauline Wamsler Joerger
Dr. Laura P. Kingsley and Mr. Richard A. Kingsley
Mrs. Jean M. Martin
Jennifer and Robert Rominiecki
Prof. Rebecca L. Barancik and Mr. Scott Barancik
Mr. and Mrs. Adam Kabinoff
Ms. Colleen M. Tobin
in honor of Van and Joyce Carlisle
Mr. and Mrs. Robert P. Jackson

Butterfly Garden Walkway Bricks:

In Honor
in memory of Mrs. Barbara Delcore
Ms. Diane L. Brenner
in honor of Duane Richau
Marie Selby Botanical Gardens
in honor of Marie Hertzig
Mr. and Mrs. Mel Hertzig
in honor of Mr. Monroe Kokin
Sarasota Orchid Society, Inc.
in honor of Nellie Wineland
Mr. and Mrs. Gene K. Wineland

In Memoriam

in memory of Dr. Joel Elkes
Mrs. Sally R. Lucke-Elkes
in memory of LaQuita Hayman
Mr. and Mrs. Phil Spooner
in memory of Leslie Schexnayden
Mrs. Hazel Steskal
in memory of Mr. C.J. Shelley
Marie Selby Botanical Gardens
Ms. Cassandra A. Worth
in memory of Mrs. Arline Puz
Ms. Mary Jo Gaio
in memory of Mrs. Kathleen Teso
Mr. Scott Noyes
in memory of Mrs. Mary Gambrall
Mr. David King
in memory of Ms. Cay Correll
Ms. Joanna Correll
in memory of Ruth and Russell Lucke
Mrs. Sally R. Lucke-Elkes

CONTRIBUTING MEMBERS

(Recognizing gifts given between February and May 2017)

Stewards of the Earth

Mr. John W. Bean and Mrs. Alexandra Jupin-Bean
Mr. and Mrs. Stephen R. Buckley
Mr. Arlan Clayton and Ms. Dale Horwitz
Mr. and Mrs. C. Martin Cooper
Mr. and Mrs. Thomas J. Degnan
Mr. and Mrs. Robert Essner
Ms. Marce Fuller and Mr. Lee De Ovies
Carol and Charles Hamilton
Mr. and Mrs. Julian R. Hansen
Mr. and Mrs. Thomas J. Hubbard
Mr. and Mrs. Jonathan Mitchell
Dr. and Mrs. Philip K. Nelson
Mr. and Mrs. Richard H. Nimtz
Ms. Marjorie L. Pflaum
Dr. Dennis A. Revicki and Ms. MaryLou Poe
Mr. and Mrs. Michael Scharf
Mr. and Mrs. Scott Schechter
Mr. and Mrs. James I. Uihlein

New Patrons

Ms. Laura Andrews
Mr. and Mrs. Robert Appel
Ms. Carolyn Blum
Mr. William Fletcher
Mr. and Mrs. Jeffrey Jennings
Mr. and Mrs. Joseph Marsh
Dr. Robert M. Salisbury and Dr. Fleur Salisbury
Mrs. Maureen Schloss
Mrs. Karen Shearer
Ms. Elsa Soderberg

Ms. Kathy Weil
Ms. Rosalie Wooten

New Benefactors

Mr. Paul Polukord

New Family Members

Mr. Brian Albertson
Ms. Beverly Allen
Ms. Kimalyn Averill
Mrs. Brittany Aylott
Mr. Lincoln Benson and Ms. Caroline King
Mr. and Mrs. Leonard Berenfield
Mr. and Mrs. Taylor Binder
Mrs. Lilla Bordas
Mr. Gilbert Bosse
Ms. Nancy Bouffigny
Mr. and Mrs. Joseph Breen
Mr. Edward Brown
Mr. and Mrs. Phil Butler
Mr. and Ms. Bryan Byrd
Mr. and Mrs. Ronald Collier
Mrs. Darla Cook
Dr. Ann Marie Ernst
Mrs. Sharon Finizio
Rev. Kelly Fitzgerald
Mrs. Susan Foster
Mr. and Mrs. Joseph Garner
Ms. Molly Gleason
Ms. Rosalie Goldberg
Mr. and Mrs. Derrick Goveia
Mr. and Mrs. Edward R. Hall
Mr. and Mrs. Charlie Harrison
Mr. and Mrs. James Healy
Ms. Kristel Heskett
Mrs. Molly Housh
Mrs. Lauren Jacobs and Mr. Rafael Alfonzo
Mr. and Mrs. David Johnson
Dr. and Mrs. Jacob Joseph
Mrs. Kimberly Kalkhoven
Mrs. Betsy Kern
Mr. and Mrs. Russell J. Killion
Mr. and Mrs. Aaron Kleiner
Mr. and Mrs. Phillip M. Knight
Mr. and Mrs. Rick Knowlton
Mr. and Mrs. John Krenicki
Ms. Frances Lambert
Mrs. Bianca Lawrence

Ms. Leone Levy and Ms. Cassandra Winters
Mrs. Martha Liberti
Mr. Michael Madden
Mr. and Mrs. John Manning
Ms. Nadina Maratta
Mr. and Mrs. David Marsh
Mr. and Mrs. Larry Metzman
Mr. Tim Minnick and Mrs. Akeelah Kuraishi
Mr. and Mrs. Iwan Mohamed
Mr. and Mrs. Thomas Moles
Mr. and Mrs. David Moore
Mrs. Norma J. Moorman
Mrs. Susan M. Moynahan
Mr. and Mrs. Harry Pascal
Mr. and Mrs. Frank Pietryka
Mrs. Heather Reid and Mr. Graham Morris
Ms. Marcia Ricker
Mr. and Mrs. Cliff Roles
Mrs. Jennifer Ruffin
Ms. Peg Ryan
Ms. Sheila Ryan
Ms. Barbara G. Ryder

Mr. and Mrs. Keith Sabiel
Mr. and Mrs. Dean Scheid
Mr. and Mrs. Greg Schmergel
Ms. Irene Sherk
Mr. and Mrs. Jack Simpson
Mr. R. F. Smith and Dr. Brenda Stowe
Mr. and Mrs. Haywood Smith
Mr. and Mrs. Jeff Sniegocki
Mr. and Mrs. Jacob Sorg
Ms. Janet Steves
Mr. Jianxun Sun and Mrs. Zheng Chen
Dr. Rhoda Taylor
Mr. and Mrs. Joseph Tegg
Mr. and Mrs. L. Lew Waite
Mrs. Renee Welch
Mrs. Patricia A. Whitman
Ms. Caroline Williams
Mr. and Mrs. Glen Wise
Dr. Richard Yonker and Dr. Phyllis Yonker
Dr. and Mrs. Seymour Ziegelman

corporate PARTNERSHIPS

Investments made in Selby Gardens by corporate partners help us accomplish our mission of conservation, botanical research, education and beautiful display of the Gardens' world-class collection of living and preserved plants.

To become involved, or for more information, contact Ann Logan at alogan@selby.org

THANK YOU

to our inaugural corporate partners.



MARIE
SELBY
BOTANICAL
GARDENS®

811 SOUTH PALM AVENUE
SARASOTA, FLORIDA 34236
www.selby.org

NON-PROFIT ORG.
U.S. POSTAGE
PAID
PERMIT #698
LEBANON JUNCTION, KY

EARTH • AIR • FIRE • WATER

THE ORCHID SHOW

OCTOBER 12 - NOVEMBER 26

PRESENTED BY:

BETTER-GRO

MAJOR SPONSORS:



MISH
NEW YORK

PLAID FOR PART BY SARASOTA COUNTY
TBD
TOURIST DEVELOPMENT TAX REVENUES

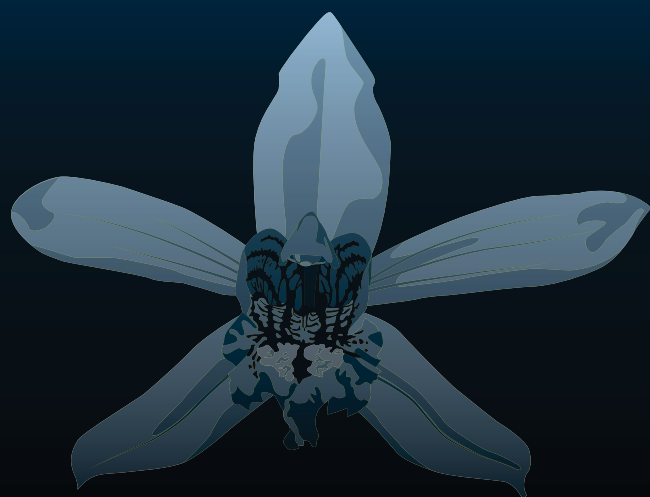


SUPPORTING SPONSORS:

Frank E. Duckwall Foundation • Roberta Leventhal Sudakoff Foundation

ADDITIONAL SUPPORT:

Alice W. Rau • Triad Foundation



ORCHID EVENINGS

AT SELBY GARDENS



6-9 PM WEDNESDAYS

OCTOBER 18 - NOVEMBER 22

Experience the Orchid Show in a whole new light during weekly orchid-inspired cocktail receptions that include live music and food and drink tastings.