

MARIE
SELBY
BOTANICAL
GARDENS®

TROPICAL dispatch

MAY-AUGUST 2018



WARHOL: flowers in the factory
THROUGH JUNE 30, 2018

VOLUME 45, ISSUE 2

Message from the President and CEO 3

NEWS 4-5

SUMMER CAMP AT SELBY GARDENS 6

ILLUSTRATING NATURE BY DESIGN
The Art of John Pirman 7

WARHOL'S FLOWERS
Opens Up a New Botanical Realm to Explore. 8-9

BUILDING WITH BROMELIADS
Selby Gardens' Addie Worth Shows You How 10-11

ORCHID BALL 2018
Setting Records and Celebrating Warhol. 12

WARHOL FOR ALL AGES
Andy's Nephew Visits Local Elementary School 13

VOLUNTEER PROFILE
Ann Vozzolo Engages Children of All Ages. 14-15

FAMILY EVENTS 15

EVENTS & EXHIBITS 16-17, 20-22

CLASSES 18-19

A LASTING LEGACY 23

SUPPORT & DONORS 24-27

Would you prefer to receive your *Tropical Dispatch* electronically?
If so, please email us at marketing@selby.org to be part of our conservation efforts.

ABOUT THE COVER

This issue's cover celebrates the *Warhol: Flowers in the Factory* exhibition with artwork from Sarasota resident and commercial artist John Pirman. This and his other work is featured in the recurring "Only in Sarasota" column in *Sarasota Magazine*.

HOURS & ADMISSIONS

Garden Hours	The Gardens are open 10 am – 5 pm every day except Christmas Day. Please check the website for special event and weather closings.		
Admission	Members: Free	Adults: \$20	
	Children 4-17: \$10	3 & under: Free	

Connect with Us! [f](#) [t](#) [ig](#) [yt](#) [p](#) @selbygardens

Tropical Dispatch ©2018 Marie Selby Botanical Gardens

BOARD OF TRUSTEES

Michael J. Wilson, Esq., *Chair*
Pauline Wamsler Joerger, *Vice-Chair*
J. Allison Archbold, Esq., *Secretary*
Arthur M. Wood, Jr., *Treasurer*
Andrew M. Economos, Ph.D.
Jean Weidner Goldstein
Teri A Hansen
Katherine A. Martucci
Daniel M. McDonald
Wayne Rollins
Sharyn Weiner
Margaret Wise
Jennifer O. Rominiecki, *President and CEO*

ADVISORY COMMITTEE

Teri A Hansen, *Chair of the Advisory Committee*
Gerri Aaron
Norbert P. Donelly
Martin Faust
William Gamble
Barbara Hansen
Katherine Harris
Stephen Hazeltine
Gary Heard
Rod Hollingsworth
Carolyn Johnson
Nora Johnson
Wilson M. Jones
GeeDee Kerr
Marcy Klein
Beverly Koski
Martin Kossoff
Dr. Elaine Marieb
Nathalie McCulloch
Charles Murphy
Alice Rau
Sandy Rederer
Michael Saunders
Charles Stottlemeyer
Dorothy Stottlemeyer
Joseph Strosnik
Dr. Laurey T. Stryker
Peggy Wood

MISSION

To provide an oasis of inspiration and tranquility, while furthering the understanding and appreciation of plants, especially epiphytes.

PROGRAM SPONSORS

Selby Gardens programs are sponsored in part by the State of Florida, Department of State, Division of Cultural Affairs; the Florida Council on Arts and Culture; and are paid for in part by Sarasota County Tourist Development Tax Revenue



MEMBER ADDRESS CHANGES

Mail: Membership
Marie Selby Botanical Gardens
811 South Palm Avenue, Sarasota, FL 34236
Email: membership@selby.org
Phone: (941) 366-5731, ext. 231



Accredited by the
American Alliance of Museums



"THE MOMENTS TO GROW AND EXPAND ARRIVE DAILY AT SELBY GARDENS."

I love that in this day and age, when there is so much technology and so much knowledge, there is still so much to learn and discover.

The moments to grow and expand arrive daily at Selby Gardens, whether our team is having new plants described in their name (Congratulations Bruce Holst, see page 5), or helping people learn something new about caring for plants like Addie Worth's bromeliads lesson on pages 10-11.

I've also heard from many of our members that you keep returning to the Jean and Alfred Goldstein interdisciplinary exhibition, *Warhol: Flowers in the Factory*, to discover what you hadn't seen during earlier visits. The exhibition continues to change with the addition of new plants, and our volunteer docents are eager to share details about what they've learned about both the plants and our featured artist.

In this issue we are also glad to share the story of one such volunteer, Ann Vozzolo, whose time at Selby Gardens is solely focused on learning (pages 14-15). Ann gives her attention to children visiting the Gardens, making sure they connect at a variety of levels to the importance of plants and nature in our day-to-day lives.

With the start of summer, the lessons won't stop. Our popular summer camp returns this June, along with the addition of a dedicated middle school program. We also have new exhibitions coming (see pages 20-21) that give us yet another way to discover the connection of nature with artistic expression.

Finally, I'd like to extend my appreciation to members of our Legacy Society (page 23). Each member has done something amazing — they have made a promise that those who come after them will continue to have Selby Gardens in their lives. This very personal and heartfelt commitment demonstrates that while there is still much to discover in our physical world, knowing that what is important to us will long be here for others to enjoy is the best wisdom we can pass along.

Cheers,

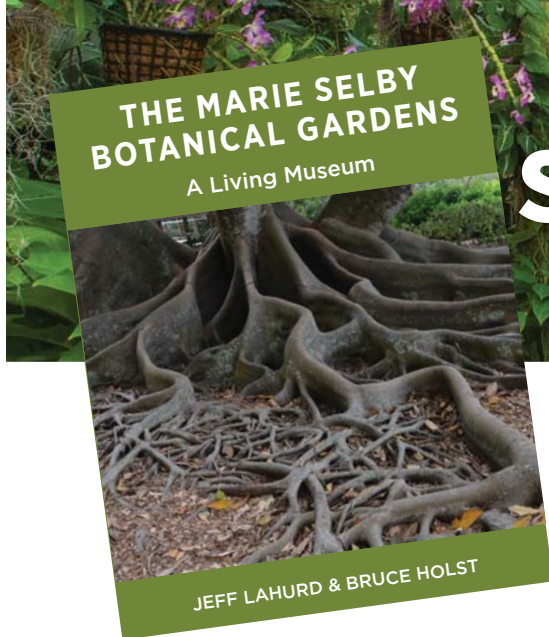
Jennifer O. Rominiecki

SELBY GARDENS HISTORY

This summer we mark what would be the 133rd birthday of Marie Selby. Marie Selby was born Mariah Minshall in Wood County, West Virginia, on August 9, 1885.

The story of her life and the gardens that came to bear her name are now commemorated in a new book, *The Marie Selby Botanical Gardens — A Living Museum*. Read the story on page 4 of how this guidebook came to be.





SELBY GARDENS, BY THE BOOK

The book is dedicated to Ann Moore Esworthy, a 41-year volunteer at the Gardens and tireless advocate and supporter. Ms. Esworthy made many contributions to Selby Gardens over the years and was one of the institution's greatest advocates, always encouraging new friends to become involved. Some of her accomplishments during her service include co-founding the Friends of the Gardens—Selby Associates, establishing the Gardens' tour guide program and writing the volunteer handbook, *Wonder as You Wander*. She also created a speaker's bureau to go out into the community to connect with those who had not yet ventured to our institution.

Ms. Esworthy was a longtime friend of Nathalie McCulloch, herself a longstanding Selby Gardens volunteer, donor and friend who chose to dedicate this book in Ms. Esworthy's honor. McCulloch underwrote the new book so that others could take home a piece of Selby Gardens history upon visiting.

The Marie Selby Botanical Gardens — A Living Museum, by Jeff LaHurd & Bruce Holst, is available for purchase at \$9.99 in the Selby Gardens gift shop.

It was nearly two decades ago when the last book about the history of Selby Gardens was written. *A Passion for Plants* debuted in 2000, summarizing a bit of the history of Marie Selby, as well as the plants the botanical garden bearing her name would go on to study and display.

After celebrating historic milestones and great successes in recent years, the time had come to update a book about Selby Gardens. This year, with the help of noted Sarasota historian Jeff LaHurd, the latest publication about our bayfront oasis was published in April. *The Marie Selby Botanical Gardens — A Living Museum*, by Jeff LaHurd & Bruce Holst, is now available in our Garden Shop, offering visitors and longtime supporters an expanded review of Selby Gardens' history, property and research.



SAVE THE DATE: Orchid Show 2018

Orchids are revered for many reasons. Their colors. Their taste (hello, vanilla). Their staggering variety. Even their once-believed health benefits. But mainly, it is the many forms that compose this most diverse plant family that first captured imaginations and continues to do so today.

Join us this fall as we celebrate orchids in their many forms during the 2018 Orchid Show. Opening October 12 and running through November 26, this year's Orchid Show will once again amaze visitors

with never-before-seen displays of orchids that celebrate the plant family's diversity.

An accompanying exhibition in the Payne Mansion's Museum of Botany & the Arts will tell the tale of this family whose beauty and intrigue has instigated passionate hunts through remote terrains in search of another exotic bloom. Related classes, lectures and events will be announced late this summer at www.selby.org.



ORCHID NAMED FOR BRUCE HOLST

A rose by any other name may still smell the same to Shakespeare, but to botanists, the naming of a new plant species is a significant and tedious task.

So it was big news in January 2018 when a stunning orchid from the "lost world" of South America was finally officially named for Selby Gardens Director of Botany Bruce Holst.

Epidendrum holstii was actually discovered 45 years ago on Mt. Roraima, one of the oldest mountain formations on Earth, a plateau floating high above the Amazon jungle that creates a natural border between Venezuela, Brazil and Guyana.

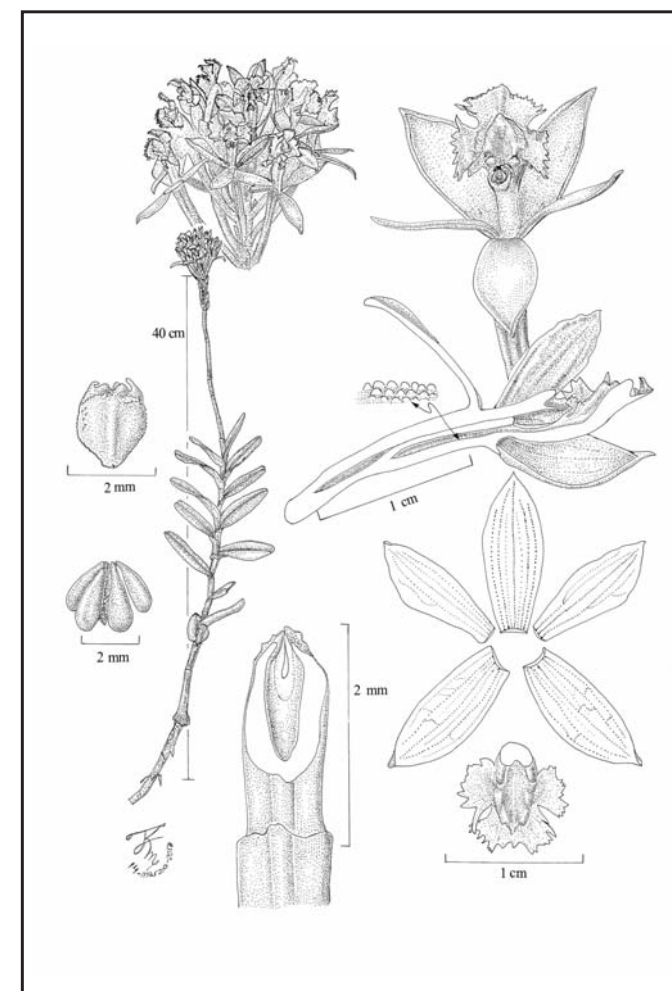
Since then, the orchid featuring crimson red petals and sepals and a pink lip has been photographed by many, and misidentified by just as many, according to Holst.

"I was able to collect it and record its distribution on the mountain summit during a series of spectacular helicopter expeditions in 2011-2012, and now two colleagues have described it for science," Holst said, noting that botanists "work thoroughly and at a careful pace."

Eric Hágsater, Mexican botanist and foremost authority on the genus; and German Carnevali of the Yucatan Center for Scientific Study published their research in the scientific journal *ICONES ORCHIDACEARUM* in January. They noted that they named the orchid "in honor of Bruce K. Holst, curator of the herbarium of the Marie Selby Botanical Gardens, who has collected extensively in Venezuela, including this species and provided essential information on its distribution."

Recently Hágsater returned to the mountain to relocate the plant and collect it for a Brazilian herbarium. He describes the summit of Mt. Roraima as "one of the most amazing places in the world."

Mt. Roraima inspired the setting for Arthur Conan Doyle's 1912 classic *The Lost World*, where prehistoric creatures survived, and in fact the flat summit is home to species found nowhere else on Earth.



EPIDENDRUM HOLSTII Hágsater & Carnevali
THE GENUS EPIDENDRUM PART 12

Plate 1623
ICONES ORCHIDACEARUM 16(1), 2018

Experience Summer

at SELBY GARDENS

Selby's Summer Camp Lookout! is a full-day camp, designed for campers aged 6-10. With a different theme each week, mornings are packed with plenty of time in the great outdoors, wading in our waters, climbing the trees and catching bugs – the way a child's summer should be! After lunch, **Camp Look!Art!** dedicated to fun craft projects and artistic exploration of the weekly theme. Register for one week, two weeks, or all three! (Three 1-week sessions, June 11-29)

NEW THIS YEAR - Camp GreenSTEM for middle schoolers! Designed for 11-13 year olds with a demonstrated interest in science and the environment. Camp GreenSTEM will immerse future problem-solvers, innovators and game-changers in hands-on inquiry and open-ended exploration of real world environmental issues that they can embrace and take action on to make a difference in their own neighborhoods and the larger world. (1 week, June 4-8)

Registration for each week of Camp Lookout is limited to 30 campers. Camp GreenSTEM is limited to 20 campers. 9:00 am to 3:00pm. Drop-off begins at 8:30 AM, pickup by 3:15pm.

WEEKLY CAMP TUITION:
\$200 Gardens members, \$220 non-members

WEEKLY THEMES

Camp GreenSTEM: June 4-8

In this week-long session, middle school campers will investigate human impacts on Sarasota Bay and other waters, learn from Selby staff and other local scientists and environmental professionals, discover interesting career paths in STEM fields, and engage in meaningful and productive teamwork. They will define and do background research on the problems, develop ideas for solutions, create prototypes and test their designs.

WEEK 1: June 11-15 "Bird is the Word!"

The sky is the limit this week as campers celebrate birds...and bugs! We'll discover how winged creatures defy gravity, turn our eyes to the skies to look for raptors, explore the shore for seabirds, go batty for flying mammals, listen to the buzz about butterflies and other insect pollinators, learn how to invite feathered friends to our own backyards and even meet local birds up close! Imaginations will take flight and creativity will soar in the afternoons with art and craft projects featuring things with wings!

WEEK 2: June 18-22 "On the Dock of the Bay"

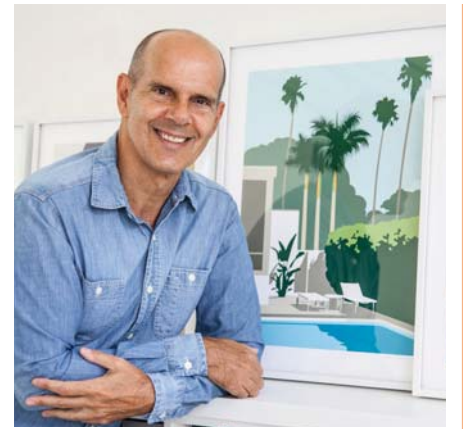
This week campers will make a splash and sweep Selby's shores for interesting discoveries, search for the fascinating creatures that live in the Bay, discover the adaptations that allow plants and animals to live in a watery world and learn about how life on land affects life in the ocean, and how we can help! After lunch, "whale" come ashore and spend the afternoons creating fun ocean-themed art projects.

WEEK 3: June 25-29 "Flower Power"

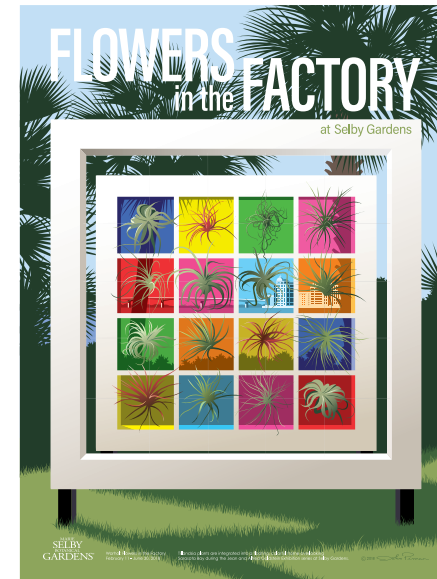
Young tree-huggers and plant lovers will spend this week going on a 5-senses tour of Selby Gardens! Campers will taste foods growing in our Rainforest Garden, learn about amazing plant adaptations, hunt for garden critters and uncover habitat diversity, get their hands dirty harvesting veggies and planting their own seedlings, discover how plants have helped people throughout history, press plants like a Selby botanist, and make beautiful floral and nature-inspired art. This week coincides with the final week of Selby's Warhol: Flowers in the Factory exhibit, and campers will have the opportunity to explore the galleries and create their own pop-art masterpieces.



Illustrating NATURE by DESIGN



EXHIBITIONS



This scene brings together Warhol's elements of repetition, color and rhythm, along with the great view of Golden Gate Point in the distance...the perfect mix for a Selby Gardens poster.

The cover image of this issue of *Tropical Dispatch* celebrates the current exhibition, *Warhol: Flowers in the Factory*. It was created by illustrator and Sarasota resident John Pirman, who in his early views of the show recognized this tillandsia-covered box would draw great attention from visitors.

"The idea was unexpected...but I think it strongly represents the show," Pirman said of when he first saw the installation. "The colorful inspiration by the water with the bromeliads and Golden Gate Point shining through the panels made a bold visual statement."

Pirman first created the image on the cover to feature in his recurring "Only in Sarasota" visual column in *Sarasota Magazine* for its April issue. A limited number of prints in poster form are also available at Selby Gardens' gift shop to commemorate the exhibition.

This was not Pirman's first connection to Warhol.

"Andy's bold colorful pop style has been a huge influence on the way I work," Pirman said. "Little did I know that the brief meeting I had with Andy Warhol in 1984 would make such a big impact in my life."

Through acquaintances in New York City, Pirman, a young freelance illustrator, made an appointment to have Warhol sign his silkscreen *Campbell's Tomato Soup* shopping bag, which Warhol produced to promote his 1966 retrospective show at the Institute of Contemporary Art, Boston. Recalls Pirman, "He shook my hand and said 'hello,' then pulled out a large flat carpenter's pencil and quickly signed his name on the bag, then walked out. It was all very abrupt. I was told the day after that Andy was very angry after seeing that shopping bag. It reminded him he never earned a profit on it even though multiple copies ended up in the museum store for sale."

Pirman did still receive a tour of Warhol's studio, then at the north corner of Union Square, which he considered a treat.

Pirman's editorial art has been featured in magazines like *Vogue*, *Fortune*, *Cosmo*, *Forbes*, *Time*, *Travel & Leisure* and many more. For 15 years The Museum of Modern Art has included his holiday cards in their retail store, and he designed shopping bags for Bloomingdales and Estee Lauder. Other clients include One World Observatory, NYC, J.McLaughlin, American Express, Pfizer, Macy's and The Ringling. His work can be viewed at www.johnpirman.com.



The origins of the artist's autographed shopping bag by Andy Warhol made an impression on a young designer.

Warhol's *Flowers* Open Up a New Botanical Realm to Explore

The art of Andy Warhol displayed in the Museum of Botany & the Arts during the ongoing exhibition **Warhol: Flowers in the Factory** features poinsettias and hibiscus, whose showy flowers provided the bright pops of colors suited to his artistic style.

Hibiscus comes from the *Malvaceae* or mallow family, and poinsettias belong to the *Euphorbiaceae* family. To acquaint visitors with the varied species that belong to those plant families, the horticulture team installed special signage throughout the garden calling attention to the plants described below.

MALVACEAE



MALVACEAE FAMILY

Within the Malvaceae family there are nearly 300 species of the hibiscus genus alone. The most commonly grown is **1. *Hibiscus rosa-sinensis***, variously known as the China rose, Chinese hibiscus, Hawaiian hibiscus and shoeblack plant. It originated in East Asia and is the national flower of Malaysia. The ephemeral flowers are edible and used fresh in salads in the Pacific Islands and dried in teas in several countries. Oil from the flowers can be used as shoe polish.

2. *Gossypium hirsutum*, commonly known as Upland cotton or Mexican cotton, is the unlikely cousin of the hibiscus. Archeological evidence from the Tehuacan Valley in Mexico shows the cultivation of this species dating to 3,500 BC, the earliest known evidence of cotton cultivation in the Americas. It is now the most widely planted species of cotton in the United States, constituting some 95 percent of all US cotton production. To prevent the spread of the boll weevil, Florida and other states prohibit the noncommercial growing of any species of *Gossypium* except under a special permit, which Selby Gardens has obtained. In addition to providing a fiber for clothing, bed linens and even paper currency (U.S. currency bills are 75 percent cotton), the plant's seeds can be used to make cottonseed oil and animal feed.

When the huge **3. *Bombax ceiba*** trees bloom at the Gardens, they always catch the attention of visitors

with seven inch by seven inch, bright red flowers that grace the branches and, in a week or so, cover nearby pathways. Commonly known as the red silk cotton tree (its genus name *Bombax* derives from the Greek word meaning silk), it is native to India and Southeast Asia, providing an ingredient in medicines used for diarrhea, inflammation, skin ailments and wounds. It has also been tested for its antibacterial and aphrodisiac properties.

Another showy tree from the Malvaceae family is **4. *Ceiba speciosa***, the floss silk tree. In Autumn, funnel-shaped pink flowers completely cover the canopy, followed by pear-shaped seed pods containing silken "floss" and pea sized seeds. At one time, this floss was used to pad life jackets and pillows, while thin strips of floss silk's bark were used to make rope.

5. *Theobroma cacao*, or cacao tree, is the source of one of the world's most delicious and familiar products...chocolate. The edible properties of *Theobroma cacao* were discovered more than 2,000 years ago by the local people of Central America living deep in the tropical rainforests. This spindly evergreen grows in the shade of giant trees occupying the top layer of the rain forest. When its seeds are dried and fermented in the sun, they are brownish red, and known as cocoa beans. The ingredients for chocolate – cocoa powder and cocoa butter – are prepared from fermented and roasted cocoa beans.

EUPHORBIACEAE



EUPHORBIACEAE FAMILY

Examples from the Euphorbiaceae family found on site include several with poisonous characteristics. While the poinsettia (scientific name **6. *Euphorbia pulcherrima***) is not poisonous to humans, pets who eat the leaves often experience vomiting and diarrhea.

The most infamous member of the Euphorbiaceae family is **7. *Ricinus communis***, commonly known as castor bean. Castor oil extracted from the plant's seeds was popularized as a medication during the 1950s and its corresponding toxic byproduct, ricin, became well known as poison in 1978 when the dissident Bulgarian journalist Georgi Markov died after being attacked and injected with a ricin pellet in London. In 2003, letters containing ricin were intercepted in the offices of President Barack Obama and a U.S. Senator. Castor oil does not contain ricin, and is used to remedy ailments including constipation, heartburn and dry skin.

8. *Euphorbia milii* is commonly known as crown of thorns, alluding to the legend that the crown of thorns that Jesus wore at his crucifixion was made from the stem of this thorny plant. In Thailand, it is said that the number of flowers on a crown of thorns plant predicts the luck of the plant owner. It's not lucky for the owner who handles the plant without gloves, however. The sap is moderately poisonous and causes irritation on contact with skin or eyes. If ingested, it causes severe stomach pain, irritation of the throat and mouth and vomiting.

9. *Manihot esculenta*, commonly known as cassava or yucca, is a food staple for millions worldwide. It is extensively cultivated as an annual crop in tropical and subtropical regions for its edible starchy tuberous root. It must be properly prepared, however, as improper preparation can leave enough residual cyanide to cause ataxia, partial paralysis or death.

10. *Jatropha integerrima*, commonly known as peregrina or spicy jatropha, is a flowering plant native to Cuba and Hispaniola. This beautiful plant is popular with gardeners because of its nearly constant display of beautiful star-shaped red flowers, which attract butterflies and hummingbirds. However, all parts of the plant are poisonous when ingested, and the milky sap can irritate the skin.

Less threatening is **11. *Acalypha hispida***, also called the chenille plant. It gets its common name from the French chenille, meaning hairy caterpillar, while also referring to the velvety strands of chenille yarn. This soft, tufted yarn has a texture and appearance similar to the plant's flowering tassels.





BUILDING with BROMELIADS

For months now the 82-foot-long “War-wol” in the Tropical Conservatory has been a focal point of the living art display of plants created for *Warhol: Flowers in the Factory*. While the structure’s creation and installation was a major undertaking, the continued maintenance of the 555+ *Neoregelia* plants that fill both sides of the 10-foot-tall box units has been another feat altogether. Keeping water levels correct at the tilted angles of the pots has presented some challenges, as did the bright sunlight shining through the glass panes on plants that prefer shading.

For the at-home gardener, our Horticulture Department offers tips for displaying bromeliads outdoors, whether potted à la Warhol, or placed on

a perch, much like the plants on the Wedding Oak found behind historic Payne Mansion.



BROMELIAD BASICS

Bromeliads, in general, prefer a more humid environment, so they would not do well inside the home. Members of the genus *Neoregelia* (commonly called Neos) are tank bromeliads meaning they hold water in the distinctive rosette shape that is created by the plant’s leaves. Neos are one of many epiphytic bromeliads that can be either potted in well draining medium surrounding the roots, or mounted on a tree branch with no medium at all around the roots.



Tank bromeliads prefer to have some water stored at all times. An absence of water in the tanks for extended period of time could cause desiccation, die back and eventually plant death.

Most Neos prefer bright filtered light, but not a lot of direct sun. Many colorful leaf patterns are visible with bright light.

“If a Neo changes from a bright to a dull color, that may be a sign it’s in need of more light,” says Addie Worth, horticulturist at Selby Gardens. “Alternatively, if a Neo bleaches out and there is an appearance of whitish/tan blisters on a leaf, that is a sign of too much light.”

MOUNTING

A mounted Neo will require more water than a potted Neo. For a bromeliad to thrive on a mounted perch, it would need to flourish without any potting medium around its roots. The tank should always be oriented upwards so the reservoir of water does not spill out. Selection of a site that can hold a heavy tank filled with water is just as important as the sunlight guidelines mentioned earlier. You will also want to use strong mounting materials to keep the plant firmly in place, Worth says.

“When mounting, I suggest a more sturdy material for attachment such as medium gauge wire or even



zip tie at the base of the ramet,” says Worth. “Within the first week of initially mounting a *Neoregelia* plant it will often slightly desiccate due to the drier condition. The mounting attachment may need to be checked to see if additional tightening of the wire or zip tie is needed.”

Addie Worth frequently teaches horticulture classes at Selby Gardens. View the latest selection of upcoming classes on pages 18-19, or visit www.selby.org.

TALKING Tillandsia

Also a bromeliad, the spiky, silver air plants known as *Tillandsia* are also featured prominently throughout the exhibition. This genus, however, has very different care requirements than *Neoregelia*.

First, most members of the genus *Tillandsia* are not tank forming. They may have similar leaf rosette shape as Neos, but no reservoir to hold water. The roots do not absorb water and are for attachment only. The leaf trichomes covering some species are very distinctive and give the entire plant a fuzzy or silverish appearance.

“The leaf trichomes absorb water and nutrients, protect the leaf from being preyed upon by herbivores and also protect the plant from damaging sun exposure,” Worth says.

Tillandsia plants in general will thrive in a spot with good light and air circulation. Most *Tillandsia* plants do not want to be potted and will rot if potted. They can be grown without potting medium at all, or mounted and placed in a bright location outdoors, which is why the multi-colored boxed display overlooking Sarasota Bay has thrived during the exhibition.



To mount a *Tillandsia*, common tools are wire, grafting tape or a zip tie. Worth says a firm attachment is necessary to allow the roots to grab onto the mount.

“Wire or tape should not restrict growth, but it should be firm enough so that the plant isn’t wiggling around,” she says. “Occasional watering is necessary if it is very dry and rain is irregular.”

THE ORCHID BALL 2018

Warhol's Floral Playground



On February 10, 2018, Selby Gardens welcomed a record number of guests - 665! - to its major annual fundraising event, The Orchid Ball. The Ball was chaired by Liebe Gamble, Katie Hollingsworth, Ashley Kozel and Emily Stroud, and raised a record amount of funds to support Selby Gardens with net revenue totaling nearly \$350,000.

Now in its 42nd year, this special event supports Selby Gardens' community education programs, international research, conservation and beautiful world-class horticulture displays. A special paddle



Co-Chairs: Liebe Gamble, Emily Stroud, Ashley Kozel and Katie Hollingsworth



Scott and Jill Ramsey, Katherine Harris and Richard Ware, Maria and Allen Heise



Pauline Wamsler Joerger and David Sales



Rogan Donnelly and Monica Kelly



raise initiative was held for the Gardens' Family Togetherness Program, which invites families in need to enjoy special events at Selby Gardens. This program is supported by the Community Foundation of Sarasota County (the evening's presenting sponsor), Tervis, Marcy & Michael Klein and Tandem Construction. It is our hope that we can help children and families develop an appreciation for nature. Our mission is to create a lifelong appreciation of botanical science, gardens and plants. Thanks to all of the Orchid Ball sponsors.



Understanding the artwork and life of Andy Warhol isn't just for adults. As part of Selby Gardens' community outreach to local schoolchildren, our Education team recently created a special program about Andy Warhol for first and second grade students at Alta Vista Elementary. How exactly?

First, when visiting Sarasota for the opening of *Warhol: Flowers in the Factory*, James Warhola, a children's book author and illustrator, and also

Andy Warhol's nephew, visited the school to talk about what it was like visiting his famous uncle. The visits became the basis for two of Warhola's many books. Warhola also spoke about how he became an illustrator and the importance of practicing whatever interests students have, whether that be drawing, playing music, reading or sports.

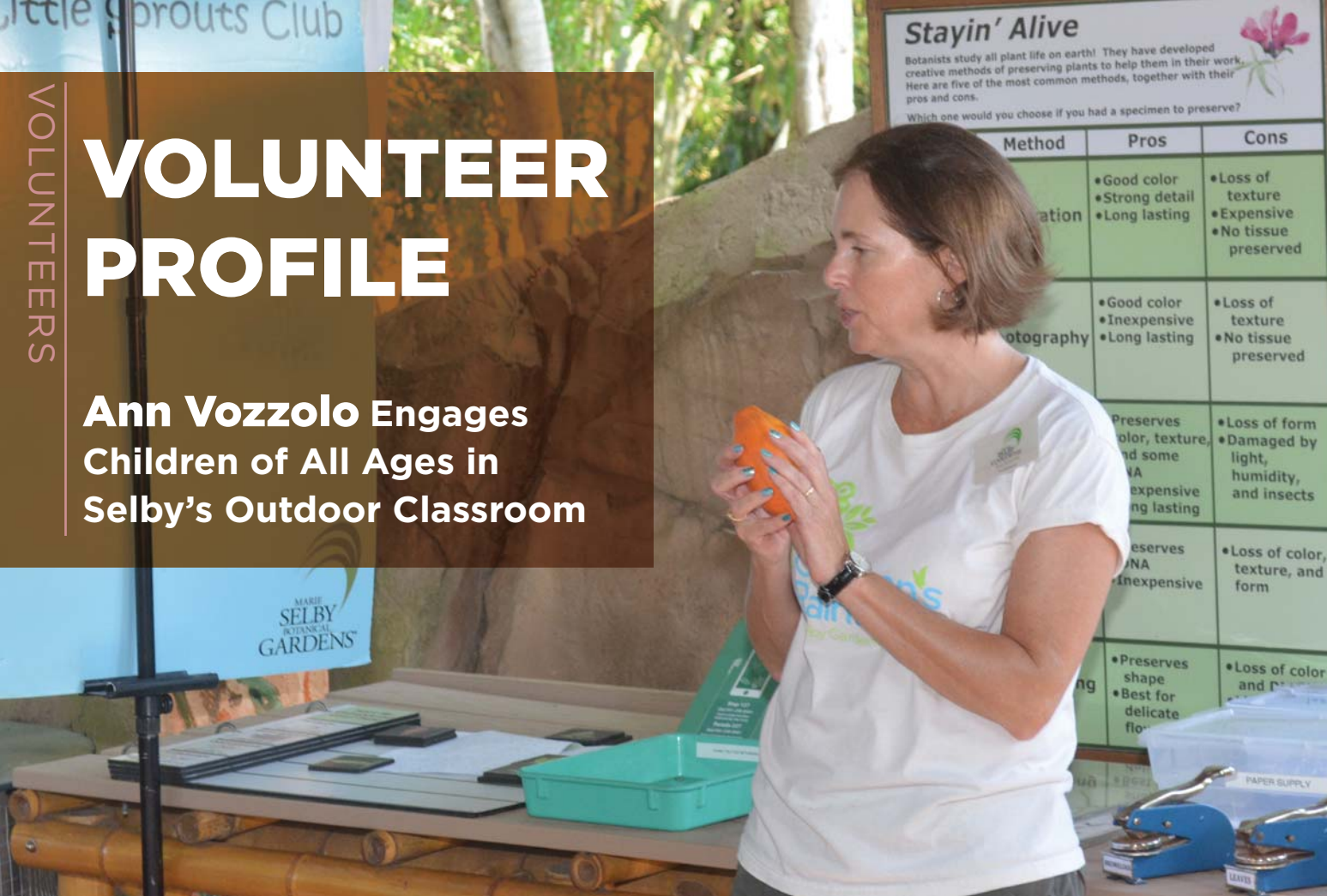
Then, a few weeks later, with support from the Community Foundation of Sarasota County and its EdExploreSRQ program, the 200 students visited Selby Gardens to see the grounds and Warhol's artwork. Here they explored the concepts that art is around us all the time, and they wrote about their experience at the Gardens, as well as created their own Warhol-inspired artwork.



First and second graders from Alta Vista Elementary visit Selby Gardens and try their hand at creating Warhol-inspired art.

VOLUNTEER PROFILE

Ann Vozzolo Engages Children of All Ages in Selby's Outdoor Classroom



TOP: Vozzolo teaches a group of visiting elementary school kids at the Ann Goldstein Children's Rainforest Garden.

ABOVE: Vozzolo holds a framed copy of an article about her service in an issue of *Roots*, the magazine of Botanic Gardens Conservation International.

Ann Vozzolo delights in sharing her love of nature with children from pre-school to high school, making her a valued Education Department volunteer.

Every Wednesday afternoon she volunteers in Selby Gardens Kid's Corner, keeping the materials in order and helping parents and children utilize the learning resources. Once a month she volunteers in the Little Sprouts Club program for preschoolers, preparing materials for craft projects and games and guiding the children's activities.

"Kids don't spend as much time outside as when I was little and my kids were little," she says. "Being outside they will be naturally curious about what is around them. The Little Sprouts are preschoolers but some of them are really into plants. That's the thing about teaching—it's a two-way street...you learn as much from them as you teach them."

Prior to moving to Sarasota five years ago, Vozzolo lived in the northern Virginia suburbs of Washington D.C., where she was an assistant kindergarten teacher and substitute teacher for 11 years. She doesn't have a background in science, but she loves learning new things.

"I'm just one of those curious people," she says. "If I have a question I do some research and figure it out."

The most challenging and rewarding part of her volunteer work at Selby Gardens is a program now in its third year for high school age students with significant cognitive impairments who attend Oak Park School in Sarasota.

Vozzolo plans the lessons with input from the school's teachers. The lesson may discuss different leaf shapes and how those affect the plants, the differences between various habitats at Selby Gardens, water quality or a special exhibit such as the Rainforest Masks.

"The kids love it. They are very happy to come here, being outside and learning about plants," she says. But it takes work to keep them engaged.

"I REALLY BELIEVE IN HANDS-ON LEARNING"

"It's a challenge doing this class because there are so many ability levels," she says. "I try to come up with something that is not going to be too boring for some of the kids, and yet not go so far beyond some of the others that they will not pay attention. Working in kindergarten for 11 years you learn that things have to be fun to keep their attention. It doesn't matter if they are 5 or 15."

The secret is to engage them in activities.

"I really believe in hands-on learning," she adds. "Let everyone try to do something themselves rather than listening to me drone on." For example, she found a kit in the Kid's Corner about looking at water to determine the pH, turbidity and temperature. "So we collected water samples from the bay and from the tidal pool and looked at them to see if they were healthy," she says. "They really liked that."

At end of the first year of the program, the Oak Park students made a book for Vozzolo, drawing pictures of things she had talked about and done with them during the year.

"It was great to have that feeling that oh boy, I got through to them. They were listening after all," she says.

A volunteer since 2013 with more than 800 hours served, Vozzolo was featured as a "pioneer in public engagement" in a recent issue of the magazine *Roots*, published by The Botanic Gardens Conservation International Education Review.

Vozzolo says the rewards of her volunteer work at the Gardens include the joy of seeing a child grasp a new concept and a new appreciation for the natural world.

"To me, the most important thing is that you are teaching kids early on the value of plants," she says. "I point out the foods and medicines that come from plants. They need to know how vital plants are to our survival."

She also derives some personal pleasure from the opportunity to meet and talk to people from around the world, and to enjoy the peace and beauty of the gardens.

"First and foremost I get to spend a few hours at Selby, which is relaxing and inspirational," she says. "I plan to continue volunteering here as long as I can."

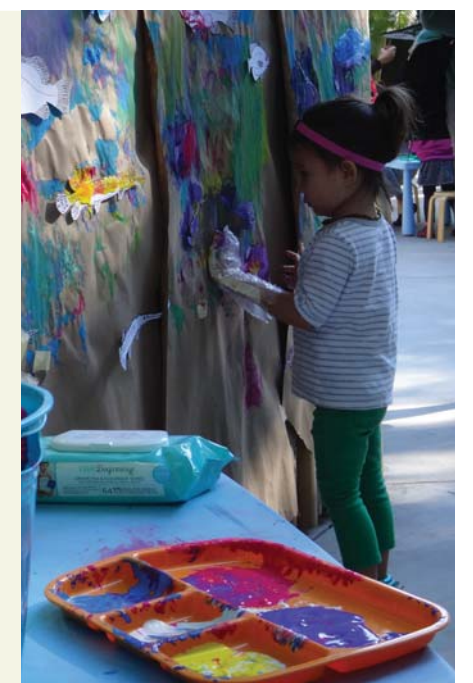
little sprouts club

MAY 3-5

FINAL SESSION OF THE SEASON! - Returning in October

Join us monthly from 10:30 to 11:30AM in the Ann Goldstein Children's Rainforest Garden. Preschool-aged children and their families are invited to explore Fun, Fabulous Florida! Celebrate the treasures of the Sunshine State, exploring different Florida plants, animals and places through sensory stations, themed arts and crafts, science activities, story time and free play. **FREE with general admission.**

SPONSORED BY: **FIRST WATCH**
THE DAYTIME CAFE



MOTHER'S DAY BRUNCH

AT
SELBY GARDENS

MAY 13 • 10:30 AM - 1:30 PM

With sweeping views of Sarasota Bay and an exquisite buffet provided by Michael's On East, mothers are sure to have a delightful day. Visit selby.org for tickets and seating times.



GARDEN MUSIC SERIES
AT SELBY GARDENS

Join us on the Great Lawn once-a-month for eclectic Garden Music Series performances:
MAY 20: Ari and the Alibis
JUNE 17: Diego Figueiredo with Chiara Izzi
FREE with general admission.



SATURDAYS IN JULY BEGINS JULY 7 10 AM-NOON

Cool off with water activities, slides and games in the shade of the iconic Selby Gardens banyan trees. **FREE to members. Included with regular admission. Under 3 free.**



WEDDINGS, CORPORATE & PRIVATE EVENTS

An urban oasis on the beautiful Sarasota Bayfront, the Gardens offer a stress-free environment conveniently located near hotels and resorts, and close to downtown shopping, dining and business facilities.

MICHAEL'S ON THE BAY offers a variety of beautiful indoor and outdoor spaces that can accommodate a full range of events, from intimate gatherings to corporate meetings. Michael's on the Bay at Selby Gardens is Sarasota's premiere indoor event facility.

- 4,800 sq/ft
- Panoramic sunset and bay views
- 250 seated/350 theater-style
- Equipped with full multimedia and A/V options.

Onsite catering at all facilities is provided by Michael's On East, the most respected event vendor in the region.

For more information, please contact Michael's On East Catering Department at 941-366-0007 or email reservations@bestfood.com.

MICHAEL'S
ON EAST

JEAN & ALFRED GOLDSTEIN EXHIBITION SERIES

WARHOL

flowers in the factory
THROUGH JUNE 30

LEAD SPONSORS



Betsy and Doug Elder



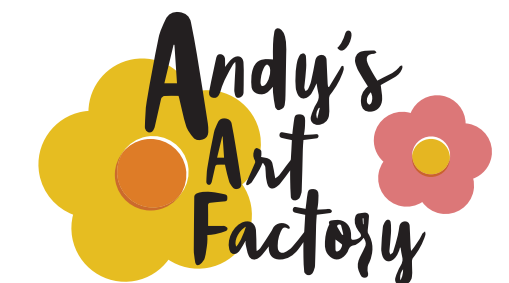
WARHOL NIGHTS

AT SELBY GARDENS

Experience Warhol's world at nighttime viewings of the exhibition, along with inspired performances by some of our area's best performing artists.

MAY 16 with FLORIDA STUDIO THEATRE

JUNE 13 with SARASOTA MUSIC FESTIVAL



A FAMILY TOGETHERNESS PROGRAM

MAY 19 & JUNE 16

Spend one Saturday a month enjoying fun children's art activities inspired by the exhibition. **FREE with general admission.**

COMMUNITY CLASSES

Marie Selby Botanical Gardens offers a wide variety of classes taught by experts in their field. Whether you want to brush up on your watercolor skills or create a scrapbook, if you want to get your hands dirty planting orchids or improve your photography, or even if you just want to start your day with relaxing yoga, there's a class for you.

ART CLASSES



Beginning Watercolor

Session I: May 14, 21 & June 4
Session II: June 11, 18 & 25
Session III: July 9, 16 & 30
Session IV: Aug 6, 13 & 20
Mon, 10:30 am – 2:30 pm

Intermediate Watercolor

Session I: May 15, 22 & June 5
Session II: June 12, 19 & 26
Session III: July 10, 17 & 31
Session IV: Aug 7, 14 & 21
Tues, 10:00 am – 2:00 pm

Gelli Plate Printing a la Warhol

Wed, May 2
10:00 am – 3:00 pm

NEW! Experimental Drawing Techniques

Fri., May 4
10 am – 1 pm

Introduction to Botanical Art: Nature Drawing and/or Painting in Classical French Court Tradition

May 7, 8 & 9
12 pm – 5 pm



NEW! Fifty Shades of Green – Fun Painting Ferns

May 16 & 17
10:00 am – 2:00 pm

NEW! Illustrating with Watercolor

Wed, May 23
10:00 am – 2:00 pm

Print the Gardens

July 12 & 13
10:00 am – 3:00 pm

NEW! Brilliant Glass Images in Watercolor

Wed., July 18
10:00 am – 2:00 pm

Drawing Flowers & Fruit with Colored Pencil in the French Court Tradition

July 23, 24, & 25
12:00 pm – 5:00 pm

NEW! Botanical-Inspired Stained Glass

Aug. 1, 2 & 8, 9, 10:00 am – 1:00 pm

Hand Built Clay Pots

Fri., Aug. 10 & 17
10:00 am – 12:00 pm



Sumi-e in the Summera Cool Aesthetic

Aug. 15, 22 & 29
10:00 am – 2:00 pm

NEW! Capture Nature with Alla Prima Painting

Thurs., Aug 16
10:00 am – 1:00 pm

NEW! Botanical Still Life

Tues., Aug. 28
10:00 am – 2:00 pm

HEALTH & DISCOVERY



Yoga in the Gardens

Session I: May 7, 14, 21 & June 4
Session II: June 11, 18, 25 & July 2
Session III: July 9, 16, 23 & 30
Session IV: Aug 6, 13, 20 & 27
9:00 am – 10:00 am

Summer Yoga Pass

Valid May 7 through Aug. 27, 2018



Release Your Inner Nature Lover- Writing and Collage Retreat for TEENS!

Wed., July 11
10 am – 12:00 pm

Release Your Inner Nature Lover- Writing and Collage Retreat

Wed., July 11
1:30 pm – 4:00 pm

HORTICULTURE



NEW! Butterfly Garden Tips

Thurs., May 10
11:00 am – 12:00 pm

NEW! A Mother's Day Aromatherapy Special: Honoring Moms – Pregnancy & New Motherhood

Fri., May 11
10:00 am – 1:00 pm



NEW! Kokedama – A Different Bonsai

Fri., May 18
10:00 am – 12:00 pm

Orchids 101

Fri., May 25
10:00 am – 12:00 pm

Potting & Mounting Orchids

Thurs., July 19
11:00 am – 1:00 pm

Growing Orchids in SW Florida

Fri, Aug. 3
10:00 am – 12:00 pm



Soapmaking with Botanicals

Fri., Aug. 24
10:00 am – 12:00 pm

PHOTOGRAPHY

Warhol Tripod Tuesdays

May 22, June 5 or June 19
9:00 am-10:00 am

Creating Natural Portraits with Photography

Thurs., May 24
1:30 pm – 4:30 pm



Explore Light in Photography

Fri., July 20
10:00 am – 1:00 pm



New! New Perspectives in Photography

Thurs., Aug. 30
10:00 am – 1:00 pm

CLASS REGISTRATION POLICIES

•**REGISTRATION PROCEDURES (1)** Register online at www.selby.org or **(2)** in person at Selby's Welcome Center.

•In the event that a class is cancelled by Selby Gardens, students will receive a full refund. Student cancellations made less than 72 hours prior to class time are not entitled to a refund or class credit.

•Material lists are available online and can be emailed or mailed upon request.

•Please visit our website for updates and additional information.

•Class sizes are limited - please register early.

•**Pre-Registration is required.** Tuition is due with registration. Pay online or use charge, check or cash in our Welcome Center.

•Registration fees are not prorated. If you do not attend any portion of class, your registration fee is forfeited.

•There are no make-up classes for students who miss a regular class session.

•Proceeds from classes support the Gardens.

In Dialogue with Nature: GLASS IN THE GARDENS

**Museum of Botany
and the Arts**

JULY 14 - SEPTEMBER 2

**Opening Reception
July 13**

Glass blowers from the **St. Petersburg Hot Glass Workshop** and the **Duncan McClellan Gallery** are partnering with Selby Gardens to bring this botanically-themed art glass exhibition to the area.

All works were made in St. Petersburg, Florida, and illustrate a variety of glassmaking techniques.

Additional talks and demonstration classes with a traveling hot shop will be announced at selby.org.

Participating artists include:

- **Maribel Bass**
- **Danyell Bauer**
- **Eric Claycomb**
- **Josh Cocozza**
- **Duncan McClellan**

Items on display will be available for purchase. A percentage of the sales go to support Selby Gardens' mission of plant research, conservation and education.

DUNCAN McCLELLAN



"Communication" by Duncan McClellan



"Dragonfly" by Duncan McClellan



"Long Laced Lucy Vase" by Danyell Bauer

Celebrate **SELBY!**

38TH ANNUAL JURIED PHOTOGRAPHIC EXHIBITION

SEPTEMBER 8-30, 2018

OPENING RECEPTION & AWARDS PRESENTATION: 5:30 - 7:30 P.M., FRIDAY, SEPTEMBER 7



2017 Best In Show winner, "A Curious Curl" by Jo Chaney.

Show what Selby Gardens means to you by sharing your photography during our 38th annual juried photo exhibition. There are five categories to present your most thoughtful, fun and inspired photographs that depict the scenery of Selby Gardens. Cash prizes will be awarded in five categories, plus an overall "Best in Show" winner will be named.

Entry forms and full rules are available at selby.org. Contact Laura Avery, Manager of Classes & Exhibits, for questions at 941-366-5731 ext. 239 or education@selby.org.

CATEGORIES:

- **Favorite Selby Scene**
- **Plant Life at Selby**
- **Selby Gardens' Geometry**
- **Selby's Birds, Bugs & Critters**
- **Selby in Black & White**

SUBMISSIONS DUE BY:

August 31, 2018

BOTANICAL BRIEFINGS:

At Selby Gardens we are committed to sharing our unique plant collections and research projects with the public through this lecture series. Participants are invited to join us in Michael's on the Bay (unless otherwise noted) to enjoy listening to presentations on topics such as orchids, field work and ecosystems. FREE with general admission.

MAY 23

FANTASTIC FERNS AND FASCINATING EPIPHYTIC FLORA OF BELIZE, CUBA AND PERU

with DR. SALLY CHAMBERS, Marie Selby Botanical Gardens



Please join Dr. Sally Chambers, research botanist with Selby Gardens, as she shares tales from recent field expeditions to Belize, Cuba and Peru. Dr. Chambers will also provide a brief overview of some of the work she has been conducting during her first year at the Gardens.

Dr. Chambers specializes in fern ecology and evolutionary biology. Her research has taken her to many beautiful places and she has encountered a variety of epiphytic plants while on these exciting adventures.

A Lasting Legacy



Carol Butera



Guests at the 7th Annual Marie Selby Legacy Society Luncheon.

Marie Selby once loaded a piano into her Cadillac and drove it to Tallahassee for use by students in a dormitory she funded at Florida State University. Or so goes one of the many delightful stories shared by Carol Butera, executive director of the William G. and Marie Selby Foundation, keynote speaker for the 7th annual Marie Selby Legacy Society Luncheon on March 8.

Members of the Marie Selby Legacy Society, along with Trustees, Advisory Committee members, staff, volunteers, and other supporters gathered in Michael's on the Bay to celebrate Marie's legacy, the bequest that made the founding of Selby Gardens possible, as well as the support of dozens

of other legacy donors over the past 45 years. The Marie Selby Legacy Society recognizes those who have included the Gardens in their wills or made other planned gifts to support Selby Gardens and its mission.

Making your own gift of a lifetime to support Selby Gardens is incredibly easy – simply include the Gardens in your estate plans or make a gift through your life insurance, retirement plan, annuity or another financial mechanism. For information on how you can leave your own Gardens legacy, please contact Ann Logan, (941) 366-5731 ext. 266 or alogan@selby.org.

corporate PARTNERSHIPS

Investments made in Selby Gardens by corporate partners help us accomplish our mission of conservation, botanical research, education and beautiful display of the

Gardens' world-class collection of living and preserved plants.

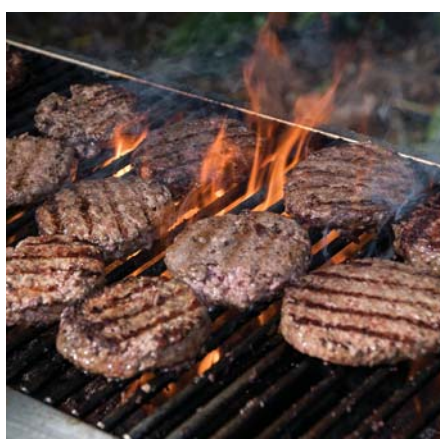
To become involved, or for more information, contact Ann Logan at alogan@selby.org

THANK YOU

to our corporate partners.



BMO Wealth Management
BMO Private Bank



JULY 4 • 6-10 PM

Celebrate the 4th of July at beautiful Selby Gardens. Listen to live music, savor the All-American favorites, take part in a variety of family and children's activities and enjoy the fireworks!

Tickets and Selby Experience passes are available at selby.org. Selby Experience passes include valet parking, open bar, food and prime viewing for the fireworks from Michael's on the Bay at Selby Gardens.

CHAIRMAN'S CIRCLE

(As of January 2018)

Sponsor

Mrs. Gerri Aaron
Amicus Foundation
Maryann and James Armour
Mr. and Mrs. Charles Barancik
The Calusa Fund
The Doris M. Carter Family Foundation
Community Foundation of Sarasota County
Mr. and Mrs. Warren J. Coville
The Frank E. Duckwall Foundation, Inc.
Drs. Andrew and Judith Economos
Mr. and Mrs. Douglas C. Elder
Gulf Coast Community Foundation
The Jewish Federation of Sarasota-Manatee
Koski Family Foundation
Mr. Ernest R. Kretzmer
Rita B. Lamere Memorial Foundation Trust
Cornelia and J. Richard Matson
MISH New York
Mr. and Mrs. Thomas J. Russell
Mr. and Mrs. Wayne F. Seidl
Mr. Joseph A. Strosnik
The Harry Sudakoff Foundation
Ms. Pauline Wamsler Joerger
Mrs. Jean Weidner-Goldstein
Williams, Parker, Harrison, Dietz & Getzen
The Woman's Exchange

Co-Sponsor

Allegiant Private Advisors
Bank of America
BMO Private Bank
Dart Foundation
Mr. and Mrs. William Gill
Mr. Dale S. Kammerlohr
Mr. and Mrs. Michael H. Klein
D. R. Long Foundation
Mr. and Mrs. Frank A. Martucci
Mrs. Evelyn S. Mink
Mr. and Mrs. Gregory T. Mutz
PNC Wealth Management
Mr. and Mrs. George Quester
Mr. Stuart Salenger
Mr. and Mrs. Zuheir Sofia
Roberta Leventhal Sudakoff Foundation
Vaughn-Jordan Foundation
Mr. and Mrs. Thomas H. Watson

Patron

Ms. Peggy C. Allen and Mr. Steve Dixon
Anonymous
Ms. J. Allison Archbold, Esq and Mr. Hugh J. Bettendorf
Mr. and Mrs. Robert G. Arthur
Mr. and Mrs. Robert G. Bartner
Mr. and Mrs. Travis Brown
The Chrisman Foundation
Ms. Jeanne L. Coleman and Mr. Stephen R. Leinhart
Dr. and Mrs. Kelvin Cooper
Ms. Carole Crosby and Mr. Larry Wickless
Mr. and Mrs. Howard R. Curd
Mr. and Mrs. Robert N. Davies
Mr. and Mrs. Robert Essner
Ace & Lillian Fessenden Family Foundation
Friends of the Gardens - Selby Associates
Ms. Teri A Hansen
Ms. Carolyn Keystone and Mr. James Meekison
Mr. and Mrs. William L. Knapp
Mr. Marvin Kocian
Ms. Cathy L. Layton and Mr. Pete Russell
Ms. Marietta F. Lee
Dr. Elaine E. Marieb
Mr. and Mrs. William L. McComb
Mr. and Mrs. Thomas E. McNerney
Ms. Carol L. Miller
Ms. Virginia A. Miller
Mr. and Mrs. Keith D. Monda
Dillard Jeff and Vicki Moore
Dr. and Mrs. Richard A. Moskovitz
Mr. and Mrs. Roy H. Park
Charlotte and Charles Perret
Mrs. Alice W. Rau
Schloss Family Foundation
Mr. and Mrs. Elli Streit
Mr. and Mrs. Hobart K. Swan
The Swart Family Foundation
Ms. Marcia Jean Taub
Mr. and Mrs. William D. Tompkins

Benefactor
Mr. and Mrs. Richard R. Ackerman
Anonymous
Mr. and Mrs. Michael R. Baker
Mrs. Libby Besse
Mr. and Mrs. Gerald Biller
Mr. and Mrs. William R. Bowles
Mr. and Mrs. Frank A. Brunnchorst
Mr. and Mrs. Robert E. Carter
Mr. and Mrs. Christopher D. Cianfaglione
Mr. and Mrs. Ron Ciaravella
Mrs. Pattie B. Clendenin
Mr. and Mrs. Christopher Cogan
Dr. Deborah E. Cohen and Mrs. Maxine Spitzer
Mr. and Mrs. C. Martin Cooper
Tom & Katie Cornell
Mr. John F. Cuneo Jr.

Mr. and Mrs. Peter J. Daley
Mrs. Bernice M. Davis
Mr. and Mrs. Neil P. DeFeo
Mr. Dan Denton
Mr. and Mrs. David Denton
Marce Fuller and Lee DeVies
Designing Women Boutique
Mr. and Mrs. James Dewey
Mr. and Mrs. Pat Dorsey
Mr. James E. Duffy and Ms. Julie N. Baker
Mr. and Mrs. Charles A. Eckert
Mr. and Mrs. Chris Elser
Mr. and Mrs. John E. Evans
Mr. and Mrs. Martin W. Faust
William C. and Joyce K. Fletcher
Mr. and Mrs. William T. Forrester
Frederick Derr & Company
Mr. and Mrs. William J. Gamble
Mr. and Mrs. Michael Gray
Mr. David A. Hagelstein and Mr. Stephen Heffron
Dr. Martha M. Harrison and Peter B. Miller
Peter and Katie Hayes
Mr. and Mrs. Stephen L. Hazeltine
Mrs. Maria Heise
Mr. and Mrs. Robert P. Jackson
Carolyn and Bob Johnson
Mr. and Mrs. William R. Johnson
Mr. and Mrs. Thomas L. Koski
Dr. and Mrs. William J. Lahners
Mr. Harry Leopold and Ms. Audrey Robbins
Dr. and Mrs. Bart H. Levenson
Mrs. Sally Ruth Lucke-Elkes
Mr. and Mrs. Thomas B. Luzier
Mrs. Flora Major
Mrs. Nathalie W. McCulloch
Ms. Erin H. McKinnon
Francis and Barbara Misantone
Mr. and Mrs. Jonathan Mitchell
Mrs. Gloria Moss
Mrs. Tatyana Mullin
Dr. and Mrs. Philip K. Nelson
Northern Trust Bank
Mrs. Isabel S. Norton and Ms. Leslie Norton
Mr. and Mrs. James M. Oates
Mr. Richard E. Perlman and Ms. Ellen Hanson
Mr. and Mrs. Peter S. Powers
Mr. Sandy Rederer
Ms. Rosemary A. Reinhardt and Mr. David P. Welle
Mr. and Mrs. Skip Sack
Mrs. Ina L. Schnell
Mrs. Betty A. Stewart
Dr. Laurey M. Stryker and Dr. Charles Stryker
Mrs. Lois Stulberg
Ms. Jessica Swift
Mrs. Sylvia M. Thompson
In memory of Paul van Antwerpen
Dr. Richard and Monica Van Buskirk

Ms. Emily A. Walsh
Mrs. Elisabeth Waters
Marianne and Doug Weiss
Dr. and Mrs. John D. Welch
Ms. Michael Ann Wells and Mr. Dave E. Soltis
Mr. and Mrs. Daniel A. West
Ms. Janet Wettlaufer and Mr. Donald Miller
Mr. Martin J. Wilhelm
Mr. and Mrs. William T. Wise
Mr. and Mrs. Arthur M. Wood
Dr. and Mrs. Frederick Wurlitzer
Ms. Judith Zuckerberg and Mr. George M. Kole

INDIVIDUAL AND CORPORATE DONORS

(Recognizing gifts given between October 2017 and January 2018)
Ace & Lillian Fessenden Family Foundation
AI & Char Hatfield Family Foundation
Mrs. Deborah A. Albarran-Sotelo
Mr. and Mrs. Stuart D. Alexander
Mr. and Mrs. Peter Alexeas
Allegiant Private Advisors
Ms. A. Arlene Allen
Mr. and Mrs. Donald W. Ames
Amica Companies Foundation
Amicus Foundation
Dr. and Mrs. Ken Andre
Mr. and Mrs. Alan G. Apfel
Mr. and Mrs. James A. Armour
Mr. and Mrs. Alessio J. Auciello
Mr. and Mrs. Philip Bachman
Mrs. Linda J. Baggio
Ms. Lisa Baggs
Dr. and Mrs. Richard T. Baillie
Mr. and Mrs. James E. Baker
Ms. Maureen A. Ballinger and Mr. Gary Gallupe
Ms. Barbara Barran
Mrs. Gail Bartlett
Mr. and Mrs. Bill Bash
Mrs. Donna A. Bath
The Benevity Community Impact Fund
Mrs. Susan G. Benjamin
Dr. David H. Benzing and Ms. Linda Grashoff
Mr. and Mrs. Theodore A. Beranis
Mr. and Mrs. Donald H. Bernstein
Mr. and Mrs. O. Gene Bicknell
Mr. and Mrs. Jerry Birnbaum
Ms. Faith F. Bishock and Mr. James Colvin
Mrs. Doris E. Bispham
Mrs. Sharon C. Black-Floyd
Mr. and Mrs. Andre D. Blaquier
Mr. and Mrs. Robert A. Blekicki
Ms. Cynthia Block
BMO Harris Bank
Mr. and Mrs. Robert Bobrow
Mrs. Barbara Bordner

Mr. Ronald E. Boring
Mr. and Mrs. Gerard I. Borod
Mr. Gilbert Bosse
Mr. and Mrs. Brian P. Bouda
Mrs. Deborah Bowers and Mr. Peter Piazza
Mr. and Mrs. Stephen M. Bragg
Mr. Gordon Bremer and Mrs. Carmen A. Bremer
Ms. Anne T. Brennan-Davis
Mr. and Mrs. Ronald A. Bricker
Mr. and Mrs. Joe Brinkmeyer
Mrs. Terrie L. Brown
Ms. E. Ann Brownell
Mrs. J. M. Bruce
Ms. Sandra J. Bruce
Mr. and Mrs. James J. Buck
Mr. Ken Bumgarner
Mrs. Marjorie E. Bundy Daku
Mr. John Buonassisi
Mr. and Mrs. Kevin P. Burke
Ms. Nancy S. Bushnell and Mr. Victor G. Reiling, Jr.
Ms. Nancy C. Buttenhein
Mr. and Mrs. Louis W. Cabot
Ms. Deborah Caffelle
Mr. and Mrs. James Chaplin
Mr. Charles H. S. Chapman
Mr. and Mrs. Edward K. Christian
Ms. DeeLila Clark
Mr. and Mrs. Christopher Cogan
Ms. Jeanne L. Coleman and Mr. Stephen R. Leinhart
Ms. Debra Coleman
Mr. and Mrs. Wade L. Collier
Mr. and Mrs. John C. Collins
Mr. and Mrs. John Collins
Community Foundation of Sarasota County, Inc.
Dr. Leah Cook and Dr. Marvin Cook
Mr. and Mrs. W. Thomas Cook
Deborah M. Cooley Charitable Trust
Mr. Marvin R. Crepea
Mr. and Mrs. Jeff Crotty
Dr. and Mrs. David C. Cuthell
Linnie E. Dalbeck Memorial Foundation Trust
Mrs. Carol B. Davenport
Mr. John De Kanel
Mr. James H. Dean
Mr. and Mrs. Thomas J. Degnan
Mr. Leon DeMere
Designing Women Boutique
Mr. and Mrs. Richard L. Diamond
Ms. Ann J. Dierks
Mrs. Linda DiGiovanna
Donald H. and Barbara K. Bernstein Family Foundation
Mr. and Mrs. Dennis T. Dorton
Mr. and Mrs. Michael L. Dow
Ms. Charis C. Downey
Elizabeth Elser Doolittle Charitable Trust

Ms. Christine M. Drewniak and Mr. David M. Farrell
Ms. Phyllis S. Dreyfuss
Ms. Lorraine H. Dubee
Mr. and Mrs. Thomas Dulski
Mr. and Mrs. James M. Dupes
Mr. and Mrs. James P. Dusenbury
Dr. Louis Dwarshuis and Dr. Marilyn Kolton-Dwarshuis
Mr. and Mrs. Joel E. Dyckes
Dr. and Mrs. Charles A. Eckert
Drs. Andrew and Judith Economos
Mrs. Elizabeth Edwards
Mrs. Theresa L. Edwards
Mr. Charles Efflandt
Mrs. Ursula M. Ehrhardt
Mr. and Mrs. Burton M. Ehrlich
Mr. and Mrs. Douglas C. Elder
Mr. and Mrs. Leon R. Ellin
Mr. and Mrs. Thomas Elliott
Mr. and Mrs. Chris Elser
Ms. Jean W. Emery
Mr. and Mrs. Douglas Engebretson
Mr. and Mrs. Jon W. Erdner
Mr. and Mrs. George A. Esworthy
ExxonMobil Foundation
Rev. Reid Farrell and Mr. Dale Willard
Ms. Deborah Feldman
Mr. and Mrs. Richard Ferguson
Mr. and Mrs. Arthur J. Ferguson
Fidelity Charitable Gift Fund
Dr. and Mrs. Joseph P. Finizio
Mrs. Judith G. Fireman
First Watch Restaurants Inc.
Mr. Ronald M. Fletcher
Florida Division of Cultural Affairs
Mr. and Mrs. Edward H. Foss
Mr. and Mrs. Stephen R. Fox
Mrs. Joan M. Fox
Mr. and Mrs. Jerry Fox
Mr. and Mrs. John M. Frantz, Jr.
Mr. and Mrs. John R. Friday
Mr. Mark Friedman and Mr. Rick Blake
Mr. and Mrs. David D. Furer
Mr. and Mrs. Joseph G. Fusé
Mr. and Mrs. Lou Fusilli
Mr. and Mrs. John P. Gallagher
Gardener Foundation
Dr. Arthur Gardikes
Gardikes Family Foundation
Mr. and Mrs. Joseph E. Garner
GE Foundation
Mr. and Mrs. Ken Geach
Mr. and Mrs. Frederick A. Gewirtz
Mr. and Mrs. Michael Gewitz
Mrs. Mary D. Gibbs
Mrs. Eugenia K. Glasser
Ms. Isabel H. Goff
Mr. Peter F. Goldbecker
Mr. and Mrs. Harry Goodan
Mr. and Mrs. Robert C. Goree
Mr. and Mrs. Albert E. Gossweiler
Mr. Edward T. Green
Mr. and Mrs. Jon Griffee
Mrs. Letitia Griffin

Mr. and Mrs. Stephen Grossman
Gulf Coast Community Foundation
Mr. and Mrs. Edward Hagen
Mr. and Mrs. Rolph Hahn
Mrs. Barbara Hajko
Mr. John T. Halbert and Ms. Gayle Maxey
Mr. and Mrs. Edward R. Hall
Mr. and Mrs. Richard Hallock
Hallock Family Foundation
Ms. Marcella Halpert
Mr. and Mrs. James P. Halstead
Hamilton Foundation
Ms. Jeanne S. Hamm
Mrs. Helen Hammerman
Mr. and Mrs. Philip N. Hammersley
Mr. and Mrs. Alan E. Harvey
Mr. and Mrs. M. Allen Hatfield
Ms. Sandra J. Hayden and Mr. Terry Hayden
Mr. Gary Helms
Mrs. Jo Hennelly
Mrs. Claudia M. Hennigan
Ms. Claire E. Herzog
Mr. Larry C. Hill
Mr. and Mrs. David Hilligoss
Mrs. Elizabeth W. Holman
Mrs. Joan V. Horan and Mr. Andrew Lutz
Mr. and Mrs. Everette I. Howell
Mrs. Betty Jo Hunkele
Ms. Adina Husak and Mr. Jiri Svada
IBM Corporation Matching Grants Program
Mr. and Mrs. Jerome P. Infantino
The Jewish Federation of Sarasota-Manatee
Ms. Hilary P. Jones
Mrs. Marie P. Jones
Mr. Dale S. Kammerlohr
Ms. Annette Kaplan and Mr. Stanley Antonoff
Mr. and Mrs. Ron Karns
Mrs. Amy Katz
Ms. Jeanne A. Katzenstein
Mrs. Lisa Kauffman
Mr. Patrick Keeling
Mrs. Margaret Z. Kelley
Mr. and Mrs. Jonathan B. Kellogg
Mr. and Mrs. Bruce Keltz
Mr. Richard Kemmler and Mr. Nicolas Curpluk
Ms. Patricia M. Kennedy
Mr. Allan M. Kersten
Mr. and Mrs. Walter Kicha
Ms. Phyllis A. Kirtley
Mrs. Patricia A. Klamert
Mr. and Mrs. Michael H. Klein
Mr. Bob Kleiser
Ms. Pat Klugherz
Mrs. Patricia Klump
Mr. and Mrs. William L. Knapp Jr.
Mr. and Mrs. J. Franklin Koehler
Mr. and Mrs. Gerald A. Kolschowsky
Gerald A. and Karen A. Kolschowsky Foundation, Inc.

Mrs. Joyce Koppel
Mr. and Mrs. Paul J. Kowatch
Mr. and Mrs. E. Ramsey Kraft
Mr. and Mrs. Richard C. Kriska
Mr. and Mrs. Arnie Kropf
Mr. William B. LaPlace
Ms. Sylvia Lansberg
Mr. and Mrs. Robert LaRoe
Mr. William Lautenberger
Ms. Dorothy E. Lawrence
Mr. and Mrs. Edgar Lawrence
Mrs. Patricia J. Lenke
Mr. and Mrs. Steven Lenz
Dr. and Mrs. Stephen Levine
Mr. and Mrs. James Lew
Ms. Susan R. Lewis
Dr. and Mrs. Allen S. Lichter
Mrs. Peggy Lichter and Mr. David DiDomenico
Mr. and Mrs. Christopher Light
Mr. Daniel R. Long III
Longboat Key Garden Club
Mrs. Phyllis S. Lowitt
Mr. John Lucas and Mr. David Lucas
Dr. and Mrs. Carlyle A. Luer
Mrs. Gerda Maceikonis
Mr. and Mrs. Joseph R. Maheu
Mr. William Manevich
Mr. and Mrs. Gregory R. Mansfield
Mr. and Mrs. Lawrence T. Markin
Mr. James Marsey and Rev. Ellen P. Marsey
Dr. and Mrs. Albert P. Marsh
Dr. J.C. Marshall
Mr. and Mrs. Allan Mason
Mr. and Mrs. Don Matchett
Mr. and Mrs. J. R. Matson
Dr. Kathleen Matthews and Mr. Alan Hundley
Dr. Matthew McCall
Ms. Ellyn A. McColgan
Mrs. Nathalie W. McCulloch
Mr. and Mrs. James H. McGuire
Mr. Thomas J. McHugh and Dr. Nansie A. McHugh
Ms. Joanne McIntyre
Ms. Carol McKeone
Mrs. Kathleen F McKown
Mr. and Mrs. James McLane
Mr. Mike McLaughlin
Mr. David Medeiros
Mrs. Anita C. Meissner
Mr. Robert C. Menson and Ms. Margo Waite
Mrs. Gail Merrick
Mr. and Mrs. Steve Merriman
Mrs. Margrit Messenheimer
Mr. and Mrs. Arthur N. Meyers
Mr. and Mrs. Lawrence Milder
Mr. and Mrs. Raymond W. Miller
Mrs. Diane Minsley
Mrs. Carol Mirabito
MISH New York
Mrs. Maria R. Molnar
Mrs. Ilse Moon
Mrs. Michelle G. Morris

Mr. Robert C. Morris
Dr. and Mrs. Richard A. Moskovitz
Mr. Henry A. Mosler
MSC Foundation Inc.
Mrs. Elizabeth F. Murphy
Ms. Maggie Murphy
Mr. and Mrs. Richard M. Murray
Mr. and Mrs. Thomas B. Newman Jr.
Mr. Eric B. Nielsen
Mr. and Mrs. Anthony Niewyk
Mrs. Teresa E. Noble
Mr. James W. Norris
Northern Trust Bank
Mr. and Mrs. Richard S. Noyes
Mr. William Nuckols
Ms. Dorothy A. O'Brien and Mr. Richard L. Antoine
Mr. Thomas L. Olson and Ms. Elizabeth B. Fugazzi
Mrs. Janet L. Osterholt
The Otterberg and Figari Trust
Drs. Babette and James Pachence
Mr. Jiten Pandya
Ms. Stephanie Pangia
Mr. Ted Parker
Mrs. Dorothy R. Pass
Mr. and Mrs. Robert J. Paulishak
Mrs. Jane A. Pecsvaradi
Mr. and Mrs. Patrick Pedonti
Mrs. Carolyn H. Peet
Mrs. Pamela J. Pelletier
Mr. and Mrs. Dean F. Pennebecker
Peterson-Lager Education Fund
Ms. Judy M. Phillips
Mr. and Mrs. Arthur C. Pickett
Ms. Julie A. Planck
Mr. and Mrs. Jon S. Pohl
Mr. and Mrs. Thomas Pollock
Dr. and Mrs. Daniel B. Pope
Publix Super Markets Charities, Inc.
Mr. Alan L. Ward and Ms. Carol Pullekines
Mr. C. Louis Putallaz
Mrs. Nicole F. Pyle
Mr. and Mrs. Thomas L. Radcliffe
Dr. Sharon L. Ramey
Mr. Robin Rapaport
Mrs. Alice W. Rau
Dr. and Mrs. Murray S. Renfrew
Mrs. Mary Jo Reston
Mr. Steven D. Reynolds
Dr. Andrew Ricci and Ms. Jacqueline Muschiano
Ms. India Riggs
Mrs. Constance P. Ring
Mrs. Teresa G. Ritter and Ms. Amy Ritter
Mr. Dennis Rivero
Mr. and Mrs. William J. Roberts
Ms. Ursula Robinson
Dr. and Mrs. Martin Rosenberg
Mr. Jason Rosenson
Mr. Robert W. Rosinsky and Mrs. Ruth Williams
Ms. Patricia Rowe
Mr. and Mrs. Nelson Roy

Mr. and Mrs. Peter M. Ruggles
Mr. and Mrs. George Ruhl
Mr. and Mrs. Stefan L. Rusnak
Mr. and Mrs. Alan Sachs
Mr. Hans R. Salheiser and Mrs. Lynette Velez
Mr. and Mrs. Ronald Saper
Sarasota County Tourist Development Tax Revenues
Sarasota Orchid Society, Inc.
Mr. and Mrs. Anthony Sayer
Mr. Robert Scarbrough
Mr. and Mrs. Edwin Schloss
Schloss Family Foundation Inc
Mrs. Ann S. Schluederberg
Mr. and Mrs. John F. Schmidt
Ms. Marion N. Schmollinger
Dr. and Mrs. Arthur Schwartz
Mr. and Mrs. Rich Scissors
Mr. and Mrs. Robert M. Scully Jr.
Erwin and Carol Segal
Mrs. Charleen Sessions
Mr. and Mrs. William C. Sexton
Dr. Judith F. Shank and Mr. Stephen G. Shank
Mrs. Joan S. Shaver
Mrs. and Mr. Karen A. Shearer
Ms. Elizabeth Sherwood
Mr. and Mrs. David W. Sherwood
Mr. and Mrs. Jay Shivers
Mr. Alan M. Shuman
Mr. William H. Siegel and Ms. Lynn S. Siegel
Mr. and Mrs. Bruce E. Sing
Mr. and Mrs. Timothy G. Smalley
Mr. and Mrs. Hudson Smith
Mr. Michael L. Smith
Ms. Mary C. Smolenski
Mr. and Mrs. Hubert Snider
Mrs. Rose Sobel
Mr. and Mrs. Zuheir Sofia
The Sommer Family Foundation
Mrs. Lynn Soussou
Mr. and Mrs. Paul C. Spangler
Rev. and Mrs. Richard O. Sparrow
Ms. Marilyn Spencer
Mr. and Mrs. Bob Spicer
Mr. and Mrs. Charles R. Spitzer
Mr. and Mrs. Harvey D. St. John
Stanley Smith Horticultural Trust
Dr. and Mrs. William Stark
Mr. and Mrs. James W. Steffke
Mrs. Nolia G. Stephan
Walter P. Stern & Elizabeth Stern Foundation
Mr. and Mrs. James Stewart
Miss Sally A. Stewart
Dr. Robert D. Stone and Mrs. Joy C. Stone
Stone Foundation
Mr. and Mrs. Charles E. Stottlemeyer
Mr. Richard L. Street
Ms. Maurie Sudock
Ms. Arlene E. Sullivan
Ms. Kathleen A. Sullivan and Mr. George D. Fish
Mr. and Mrs. Earl Summers

Mrs. Jane S. Summerville
Mr. and Mrs. Erik A. Svenson
Mr. Swain
Ms. Megan Swick
Mr. Thomas R. Swift and Dr. Pat Eggleston
Mr. Larry Tabacco
Ms. Sylvia B. Temmer
Mr. and Mrs. Michael Riebe
Mr. and Mrs. John S. Thomas
Mr. and Mrs. George R. Thompson
Ms. Margo Tibbe
Mr. and Mrs. Neale Tomkinson
Ms. Mary A. Tracy
Mrs. Kathy Trautman and Mr. Randy Woelfel
Mr. and Mrs. Robert B. Treacy
Mr. Martin Tucker Ph.D.
Mr. and Mrs. James H. Turner
Mrs. Alice Tybout
Dr. and Mrs. Dean F. Uphoff
Mr. Al Usack and Mr. Ed Kobee
Mr. and Mrs. Peter Vandermark
Mr. Stanley Vickers
Ms. Clare Villari
Ms. Anne M. Virag and Mr. Morton Siegel
Mr. Jerry W. Lambdin and Mrs. Laura L. Wagner-Lambdin
Dr. Doris Wall and Dr. Fred Gustavson
Ms. Joann Wallace and Mr. Barry Pfouts
Mr. and Mrs. Michael P. Wallace
Ms. Jeannine A. Walter
Ms. Pauline Wamsler Joerger
Ms. Katy M. Warner
Joanne J. Webster
Mr. and Ms. Leon R. Wechsler
Mrs. Adra M. Weilbacher
Mr. and Mrs. Jeffrey Weisband
Mr. and Mrs. John R. Weiss
Mr. and Mrs. William Weldon
Ms. Iris Wenglin-Bergas
Dr. Stanley G. Werner
Ms. Katherine M. Werner
Mr. and Mrs. Robert Wetzel
Mr. and Mrs. Garry Wharton
Mrs. Kathryn Wheeler and Ms. Philippa Le
Mr. and Mrs. Don Wilborn
Mr. Carl J. Wild
Mr. Ralph Wilkinson
Mr. and Mrs. Robert Williams
Mr. and Mrs. Thomas E. Williams
Mr. and Mrs. John A. T. Wilson
Mr. and Mrs. John Wilson
Ms. Mary Winckler
Ms. Nan Winters
Dr. and Mrs. Roy Witherington
Mr. and Mrs. John Witton
Mr. and Mrs. Michael Wojnowski
Mr. Kenneth P. Wolford
Mr. and Mrs. Wendell Wolka
Wood Family Foundation
Mr. and Mrs. Robert E. Woods
Ms. Jane Y. Woods

Ms. Mari Wright
Mrs. Frances F. Wurlitzer
Mr. and Mrs. Susumu Yamashita
Mr. and Mrs. Thomas M. Yamin
Ms. Kathleen Young
Mr. and Mrs. James H. Young Jr.
Ms. Mary Younglove and Mr. Leonard Tavormina
Ms. Marsha Zapson
Mr. and Mrs. Glenn R. Zastrow
Mr. and Mrs. William C. Zoller
Ms. Gulnar Zolotukhina

GIFTS IN KIND

(Recognizing gifts given between October 2017 and January 2018)
Mr. and Mrs. Gregory D. Art
Artists Rights Society
Benchtop
Dr. Peggy-Anne Brown
Bullis Bromeliads
Ms. Dorothy R. Chandler
Mrs. Nancy K. Cortessis
DataIntegrity Services
Mrs. Bernice M. Davis
Dolphin Aviation
Fontana CPAs
Mr. William T. Harrison Jr.
Hazeltime Nurseries, Inc.
Mr. Bradley Jerman
Mrs. Marie R. Keeney
Kona Ice Sarasota
Mrs. Beverly L. Koski
Michael's On East
Myakka Aquatics
Mr. and Mrs. Brett J. Nagot
Oracle | Netsuite
Mr. and Mrs. Thomas B. Peter
Pixie Painting
Mr. Earl Roloff
Serbin Printing
Mr. and Mrs. Elhanan Streit
Sun Bulb Company, Inc.
Tailored Twig
The Production Crew
Tournesol Siteworks
U.S. Tent Rental, Inc.
Ms. Pauline Wamsler Joerger
Mr. and Mrs. Brad Willhite
WUSF Public Media

TRIBUTES

(Recognizing gifts given between October 2017 and January 2018)
Memorial Tree Contributions
in loving memory of Janice Ann Olson
Mr. and Mrs. George Quester
Memorial Bench Contributions
In memory of Mrs. Joyce Clements
Mr. and Mrs. Michael Grime

Memorial Contributions

In loving memory of Donna Brace Ogilvie
Donald C. Brace Foundation
In memory of Craig H. DeJongh
Mr. and Mrs. John DeJongh
In memory of Dr. G. Wallace Letchworth
Dr. and Mrs. Vincent G. Stenger
Ms. Grace A. Tyner
In memory of Judith A. McChesney
Mr. John Simmonds
In memory of Mr. Alfred R. Goldstein
Mr. and Mrs. James J. Buck
In memory of Mr. C.J. Shelley
Mrs. Marilyn R. Shelley
In memory of Mr. Gary A. Bickersteth
Mrs. Ashley Marini
Mr. Dennis Sawinska
In memory of Mr. James J. Kitchell
Ameriprise Financial
In memory of Mr. Rainer T. Blomster
Mr. and Mrs. Kevin Merideth
In memory of Mrs. Ann M. Esworthy
Mrs. Carmen G. Baskind
Mr. and Mrs. James H. Brandt
Dr. John R. Clark III
Mrs. Fay K. Donaldson
Mr. and Mrs. Scott Fletcher
Mrs. Ann M. Gamble-Blechta
Mr. Robley Gerdetz
Mr. and Mrs. Douglas Griffin
Mr. and Mrs. Stephen Picazio
Ms. Kay K. Hale
Mr. and Mrs. Julian R. Hansen
Mr. and Mrs. Michael L. Hicks
Mr. and Mrs. Melvin L. Lestock
Ms. Ann M. Lipsky
Mr. and Mrs. Robert E. Madden
Mr. David A. Muolo
Dr. and Mrs. Philip K. Nelson
Mr. and Mrs. Robert J. Paulishak
Mr. and Mrs. Richard Pease
Mrs. Sally Robinson
Mr. and Mrs. Robert M. Scully Jr.
Mrs. Margarete van Antwerpen
Mr. and Mrs. Burton Washburn
Ms. Michael Ann Wells and Mr. Dave E. Soltis
In memory of Mrs. Betty J. Wilhelm
Mr. and Mrs. Steven R. Wilhelm
in memory of Mrs. Marcia Bocian
Mrs. Valerie Bernstein
Mrs. and Mr. Susan Talber
In memory of Mrs. Thelma M. Thompson
Mrs. Letitia A. Funk

Honorarium Contributions

In honor of Andrew and Judith Economos
Mr. and Mrs. Michael T. Svirsky

In honor of Bruce K. Holst
Dr. Paul M. Ressler
In honor of Mr. and Mrs. James M. Dewey
Mr. and Mrs. Gregory R. Mansfield
In honor of Mrs. Juli Beth Russell
Ms. Rita Eagle
In honor of Mrs. Lisa Evans Schanz, Christmas 2017
Mr. and Mrs. David Barendsfeld
In honor of Mrs. Mary L. Powers
Ms. Deborah Feldman
In honor of Ms. Teri A Hansen's birthday
Mr. and Mrs. James J. Buck
In honor of Ms. Wilda Q. Meier
Ms. Diana Britton
In honor of Skip Metheny
Judge Caryl Privett
In honor of the marriage of Katherine Harris and Richard Ware
Mr. and Mrs. J. Michael Hartenstine

Butterfly Garden Walkway Bricks

In Memoriam
In memory of Arlene Butera
Mr. Marvin Kocian
In memory of Arlene Hope Schwen
Mr. and Mrs. Gene Doupe
In memory of Edward Alan Ahlersmeyer
Mrs. Millie Ahlersmeyer
In memory of Hank Rowekamp
Mr. Richard Hogan
In memory of John Manning
Mr. Marvin Kocian
in memory of Kathy Kocian
Mr. Marvin Kocian
In memory of Mrs. Ann M. Esworthy
Friends of the Gardens - Selby Associates
In memory of Patricia Carlson
Ms. Ann Guillion
In memory of Mr. J. Wladimir Sebek
Mr. Christian Sebek

In Honor

In honor of Bijou
Mr. Steven Berretta and Ms. Miriam Echevarria
In honor of Bill and Debbie Tiffany
Mr. Gary Tiffany and Ms. Karma Lewis
In honor of Chris and Erin Hayes
Mrs. Kathleen Z. Hayes
In honor of Frederick and Francesca Ozdoba
Jennifer and Robert Rominiecki
In honor of James and Eleanor Stoddard
Ms. Meredith Stoddard

In honor of Martin and Zelia Trueb
Mr. Martin R. Trueb
In honor of Mrs. Maureen Drackett
Ms. Robin Colamarino
In honor of Shaun Tamosaitis and Alex Kauffman
Mr. Shaun Tamosaitis and Mr. Alex Kauffman
In honor of the Friedrich Family
Mr. and Mrs. Don Friedrich

CONTRIBUTING MEMBERS

(Recognizing gifts given between October 2017 and January 2018)
Stewards of the Earth
Mr. John W. Bean and Mrs. Alexandra Jupin-Bean
Mr. and Mrs. Stephen R. Buckley
Mr. Arlan Clayton and Ms. Dale Horwitz
Mr. and Mrs. C. Martin Cooper
Mr. and Mrs. Thomas J. Degnan
Dr. Kimberly S Dunn
Ms. Marce Fuller and Mr. Lee De Ovies
Mr. and Mrs. John Gartner
Mr. and Mrs. Charles H. Hamilton
Mr. and Mrs. Julian R. Hansen
Mr. and Mrs. Thomas J. Hubbard
Dr. Allen N. Jelks and Dr. Mary Larson Jelks
Mrs. Amy Katz
Dr. and Mrs. Keith March
Mr. and Mrs. Richard H. Nimtz
Mr. and Mrs. Frederick Ozdoba
Ms. Marjorie L. Pflaum
Dr. Dennis A. Revicki and Ms. MaryLou Poe
Jennifer and Robert Rominiecki
Mr. and Mrs. Michael Scharf
Mr. and Mrs. Scott Schechter
Mr. and Mrs. James I. Uihlein
Mr. and Mrs. Robert Wetzel

New Patron Members

Mr. Darin Bahl
Dr. and Mrs. Donald Black
Mr. J. Wade Kennedy
Ms. Kathy A. Lenz and Mr. David Howell
Mrs. Linda Malisoff
Ms. Rebecca Sawyer-Fay
Mr. and Mrs. Robert Schaub
Ms. Joanne Thompson

New Family Members

Mr. and Mrs. Roberto Arguedas
Dr. and Mrs. Lawrence Bennett
Dr. Brian Betensky
Dr. and Mrs. Shamindes Bhullar
Ms. Kerri Blenker
Mr. Eric Borg
Mrs. Pamela Burke
Mr. and Mrs. Matt Burkmier

Mr. Mark Caragiulo
Mr. Ryan Chase
Mr. and Mrs. Jason Conner
Mr. and Mrs. Glenn S. Davis
Rev. John Stubbs and Ms. Laura Deming
Mr. and Mrs. Chris Dibert
Mrs. Ursula Egloff
Ms. Naomi Ewald
Mr. and Mrs. Jonathan Figlinski
Mr. and Mrs. Robert Frisco
Mr. and Mrs. Michael Glismann
Ms. Kathleen Homan
Mrs. Vandana Iyengar and Mr. Sri Chakravarty
Mr. and Mrs. Gary Jodat
Mr. and Mrs. Andrew Laino
Mr. and Mrs. David Leadbetter
Mrs. Marie-Elizabeth Lecours
Mr. and Mrs. Trent Lewis
Dr. Stephanie Lirio and Dr. Apollo Lirio
Mr. Joe Marinucci
Mrs. Susie Martinez
Dr. and Mrs. Scott Martz
Mr. Henry R. Mastrianna and Ms. Leslie J. Mastrianna
Ms. Celeste McKeever
Ms. Lori McMillan
Mrs. Crystal Monaco
Mr. Bill Murphy
Mr. Rick Nolan
Mr. and Mrs. Richard Noll
Mrs. Anita Ochab
Mr. and Mrs. Benjamin Ponte
Mr. and Mrs. Gabriel Quave
Ms. Kathy Ragan
Ms. Lisa Riley
Mr. and Mrs. Noah Riner
Mr. Peter Robinson
Mr. and Mrs. Henry Romero Contreras
Mr. and Mrs. Edward Rosenthal
Mr. Jacob Rowe
Mrs. Jeannie Sarason
Mr. and Mrs. Corey Schmitz
Mr. and Mrs. Shahri Shahida
Mr. and Mrs. Q. Shariff
Ms. Jaleh Siyan
Ms. Edna Smith
Mr. and Mrs. Edward Smith
Mrs. Christina Solomon
Mrs. Elaine Souliere
Mrs. Janice M. Stone
Mr. and Mrs. Michael Talbot
Mrs. Colleen Tevens
Mr. and Mrs. Thomas R. Voss
Mr. Destin Wells
Ms. Coralea Wennberg
Mrs. Gina Wilcox
Mr. Alan Willis
Mr. and Mrs. Gary Wolkstein
Mrs. Jane Wong

2018 JEAN & ALFRED GOLDSTEIN
EXHIBITION SERIES

INTRODUCES



WARHOL

flowers in the factory

FINAL DAYS! ENDS JUNE 30

LEAD SPONSORS



Betsy and
Doug Elder



MAJOR SPONSORS

Gerri Aaron • Maryann and James Armour • Better-Gro • BMO Private Bank • The Doris M. Carter Family Foundation • Margot and Warren Coville • Drs. Andrew and Judith Economos • Gold Coast Eagle Distributing • Ernest R. Kretzmer • Flora Major • Katherine and Frank Martucci • So Staged • Williams Parker Harrison Dietz & Getzen

SUPPORTING SPONSORS

Beverly and Bob Bartner • Linnie E. Dalbeck Memorial Foundation • Dart Foundation • Marcy and Michael Klein • The Woman's Exchange

ADDITIONAL SPONSORS

Teri A Hansen • Aimee and Chris Cogan/Maria and Allen Heise • Charlotte and Charles Perret